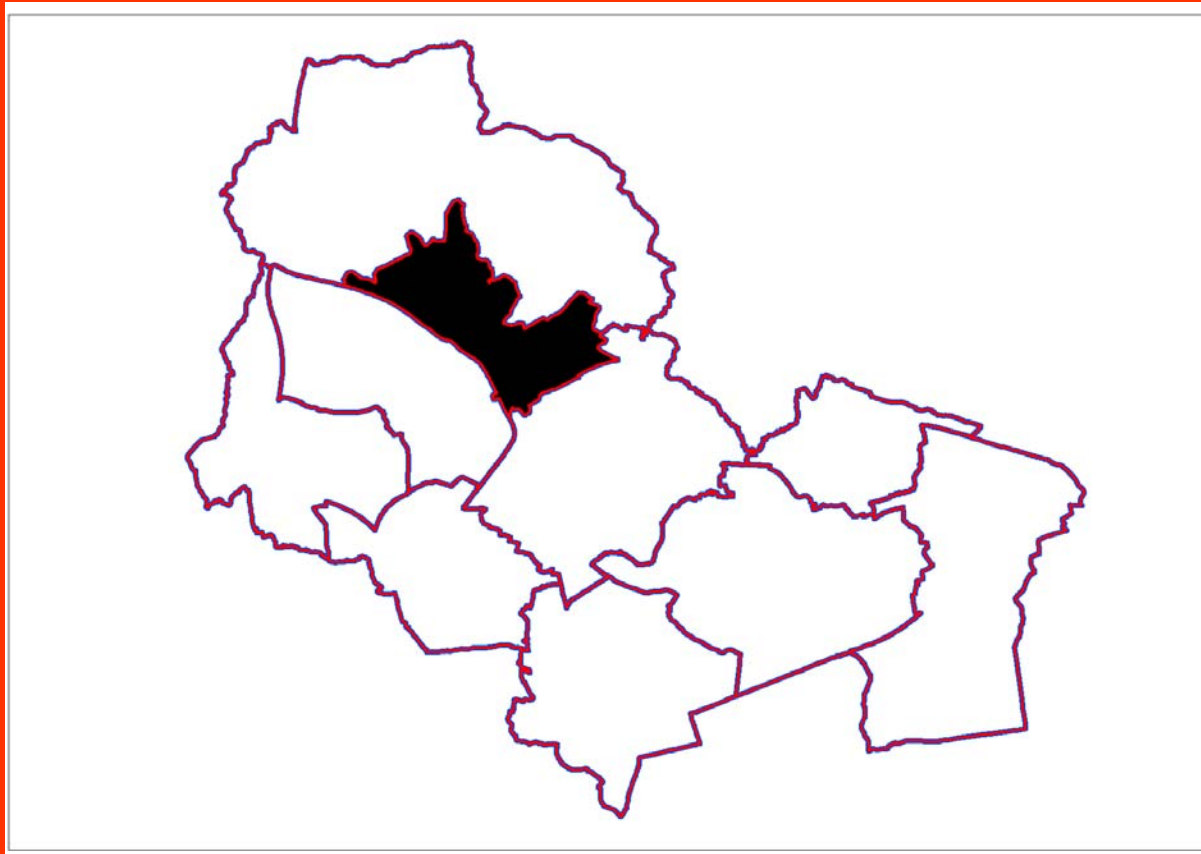


Health Profile

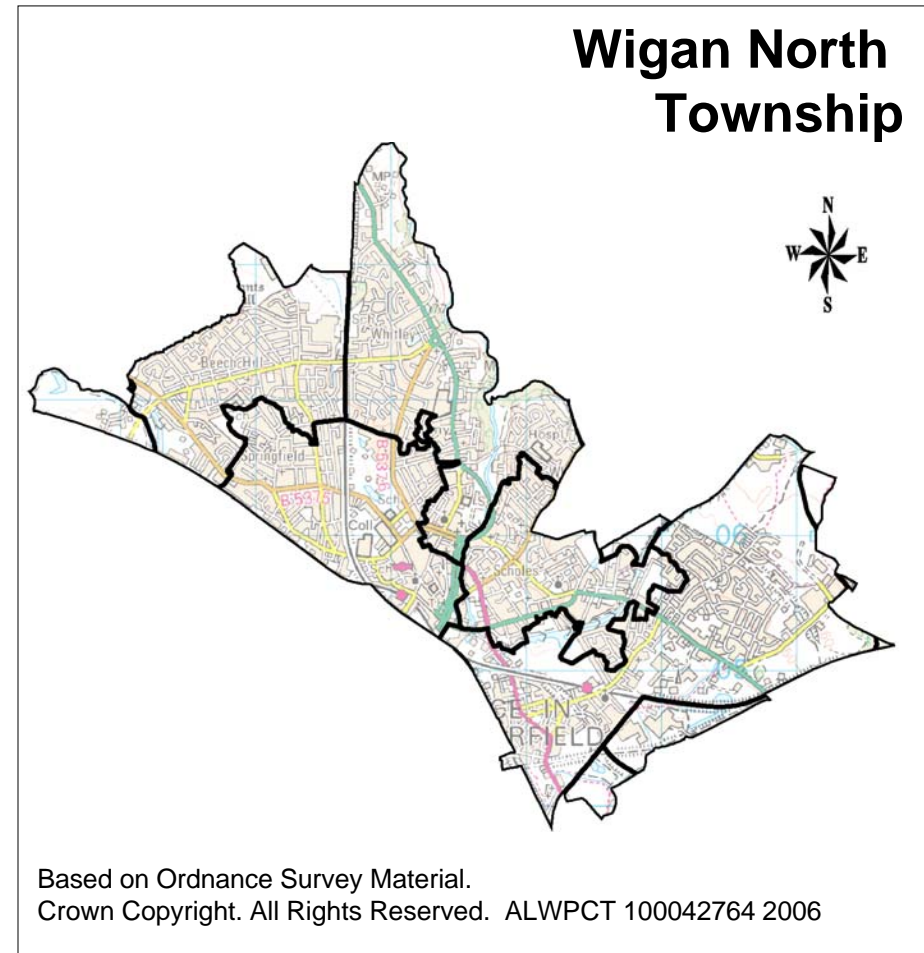
Wigan North Township



Description

General

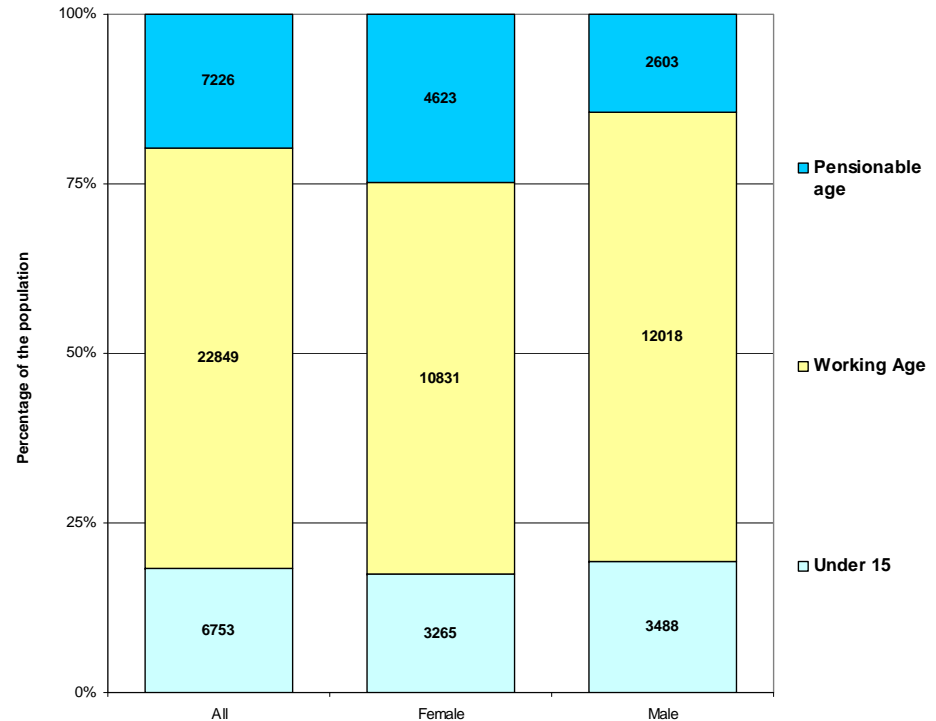
- Wigan North Township is bordered by Standish Aspall Shevington, Hindley Abram, and Wigan South Townships.
- Wigan North Township includes the electoral wards of Wigan West, Wigan Central, and Ince..



Population

- Wigan North Township has an estimated population of 36,828.
- This is in the mid range of the population of all the townships in the borough.
- Wigan North Township has the third highest population of any of the townships and the highest population density at 3,365 residents per square kilometre.
- 18,109 (49.17%) of the residents of Standish, Aspull, Shevington Township are male and 18,719 (50.83%) are female.
- There are almost twice as many women (4,623) at retirement age than men (2,603) in Wigan North Township. Over all women of pensionable age of make up 24.7% of the population of this township and men of pensionable age make up 14.37%

Population breakdown for Wigan North Township



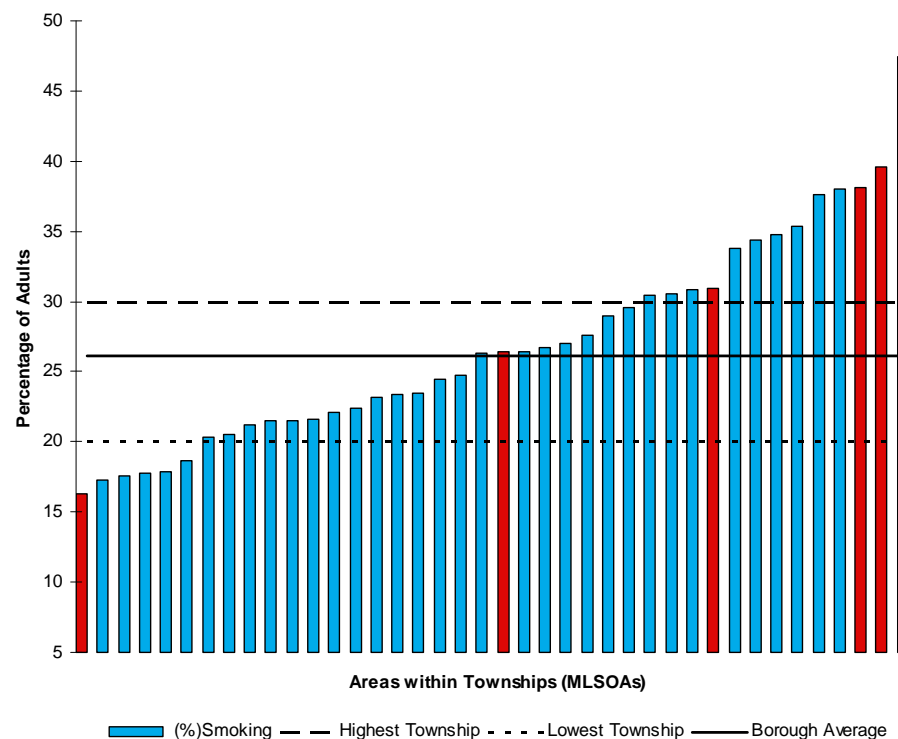
Based on ONS mid 2007 population estimates for middle layer super output areas. Pensionable age assumes male retirement age of 65 and female of 60.

Lifestyle

Smoking

- 26% of the adult population of Wigan borough are smokers compared with 24% in England overall.
- The Health and Lifestyle Survey (2005/2006) suggests that younger residents are more likely to be current smokers than older residents and men are more likely to have smoked than women.
- Estimates suggest that overall 26.3% of adults in Wigan North Township Smoke. This is similar to the borough average but higher than the England average.
- Wigan North Township estimates vary widely. This township has both the area in the borough with the lowest estimate at 16.3 as well as two of the highest at 38.1% and 39.6%.
- The areas with the highest smoking estimates are the east and south of Wigan North Township. The area with the lowest estimate is in the north.

Percentage of adults who smoke across Wigan Borough with areas in Wigan North Township highlighted

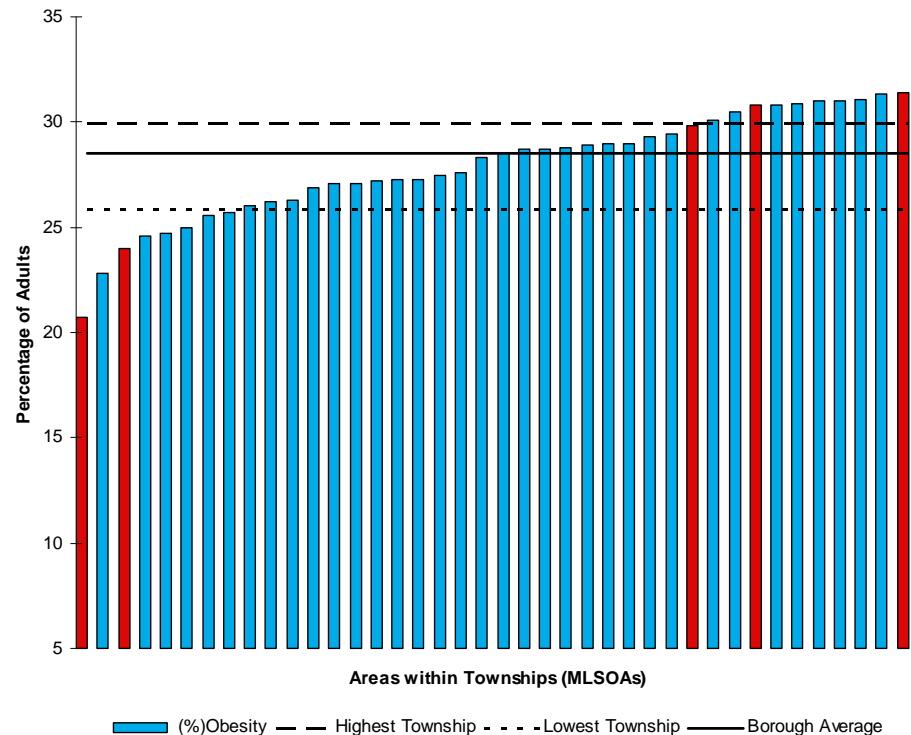


Lifestyle

Obesity

- Overall levels of adult obesity in Wigan borough are estimated to be much higher than the national average.
- 28.5% of the population of Wigan borough are obese compared to 23.6% of the England population as a whole.
- 27.3% of the adult population of Wigan North Township are estimated to be obese. While this is lower than the Wigan Borough average it is higher than the England average.
- Levels of obesity vary widely between areas in Wigan North Township. This township contains both the areas with the lowest (20.7%) and highest estimates (31.4%) across the borough.
- The east area of Wigan North Township has not only the highest estimates for obesity in this township but also in the borough.

Percentage of obese adults across Wigan Borough with areas in Wigan North Township highlighted

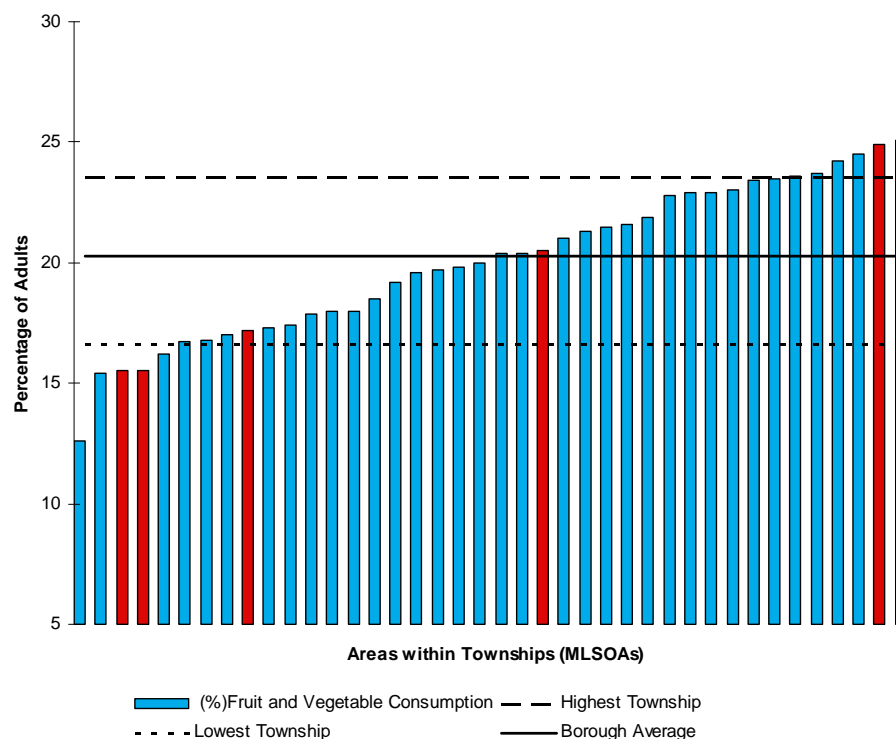


Lifestyle

Diet

- Fewer adults in Wigan have a healthy diet compared to England as a whole.
- The national average for healthy eating is 26.3%
- Estimates for healthy eating in Wigan borough suggest that only 20% of the adult population overall eat the recommended five daily portions of fruit and vegetables.
- It is estimated that 18.7% of the adult population of in Wigan North Township eat the recommended amount of fruit and vegetables. This is lower than both the England and Wigan borough averages.
- The range of estimates for healthy eating in Wigan North Township is wide ranging between 15.5% and 24.9%.
- With estimates of 15.5% the areas in the east and south of Wigan North Township have some of the lowest figures for healthy eating in the borough.

Percentage of adults who eat healthily across Wigan Borough with areas in Wigan North Township highlighted

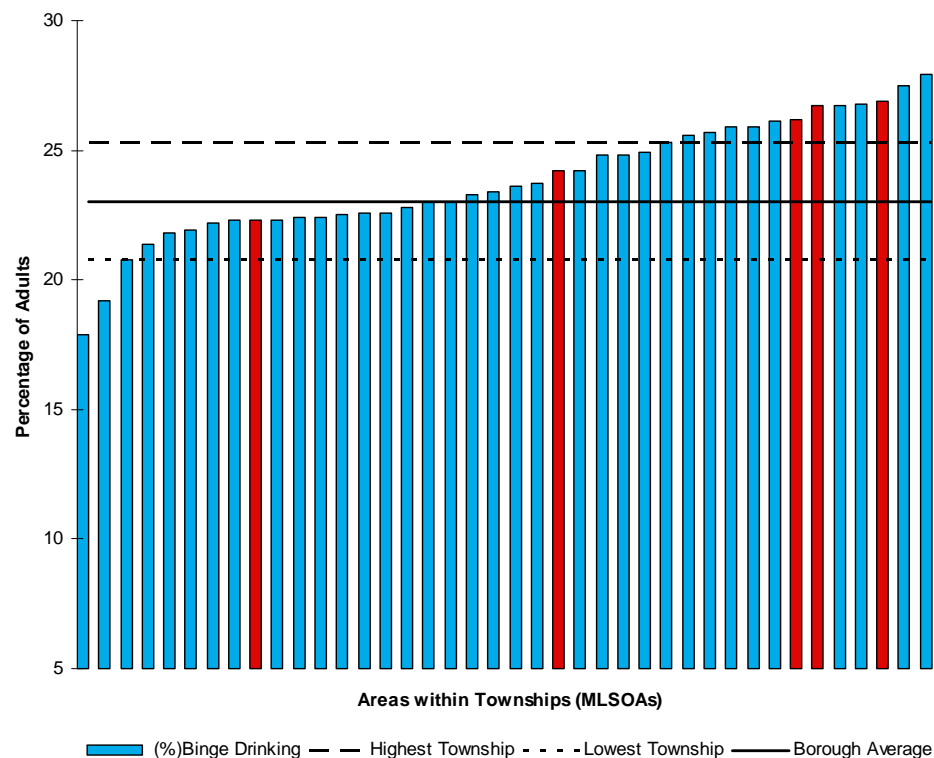


Lifestyle

Alcohol

- Estimates for binge drinking in Wigan borough suggest that 23% of the population binge drink. This is higher than the England average of 18%.
- Estimates suggest that about 25.3% of the adult population in Wigan North Township binge drink. This figure is higher than borough average and the England average.
- For areas within Wigan North Township there is a wide range of estimates. The lowest figure for binge drinking is 22.3% and the highest 26.9%.
- Wigan North Township has three areas that are among the top six for binge drinking in the borough. These are in the east, central and south of the township.

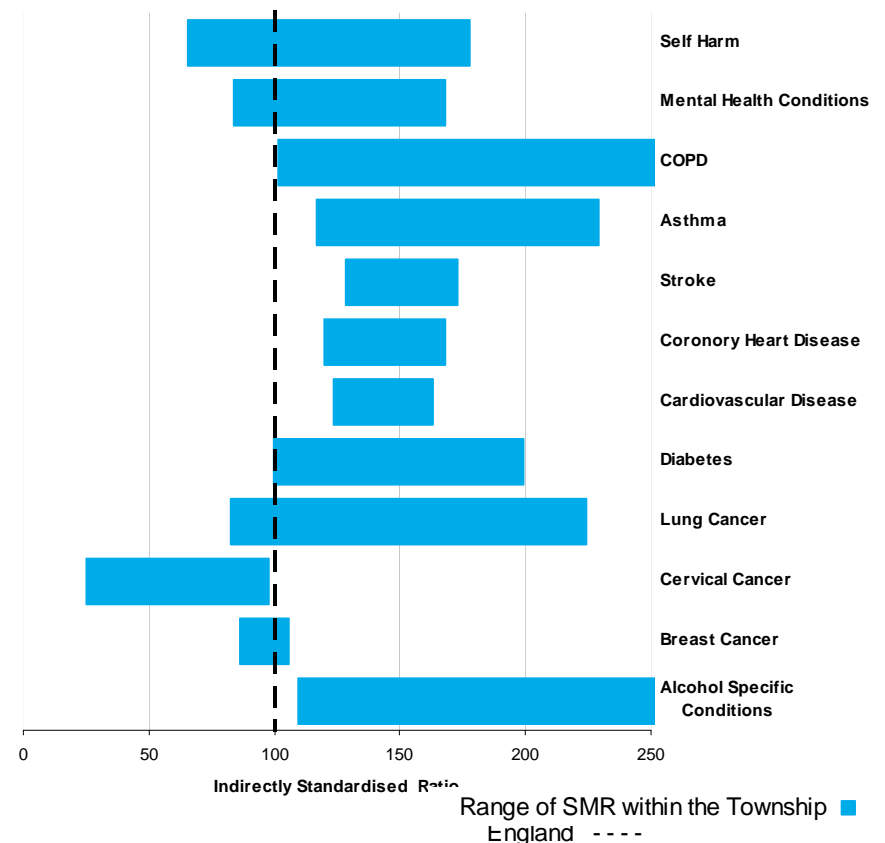
Percentage of adults who binge drink across Wigan Borough with areas in Wigan North Township highlighted



Disease

- These ratios compare the expected disease levels with actual disease levels in a population.
- There is a wide range of ratios for COPD and asthma in Wigan North Township. Ratios for both COPD and asthma are highest in the east, south and west
- Ratios for lung cancer are highest in south and east of Wigan North Township.
- All areas except the north of Wigan North Township have high ratios for coronary heart disease, cardiovascular disease and diabetes. Stroke ratios are highest in central and east areas of the township
- All areas except the north of Wigan North Township have high ratios for alcohol specific conditions. East and south areas have significantly higher ratios.

Range of standardised ratios between areas in Wigan North Township

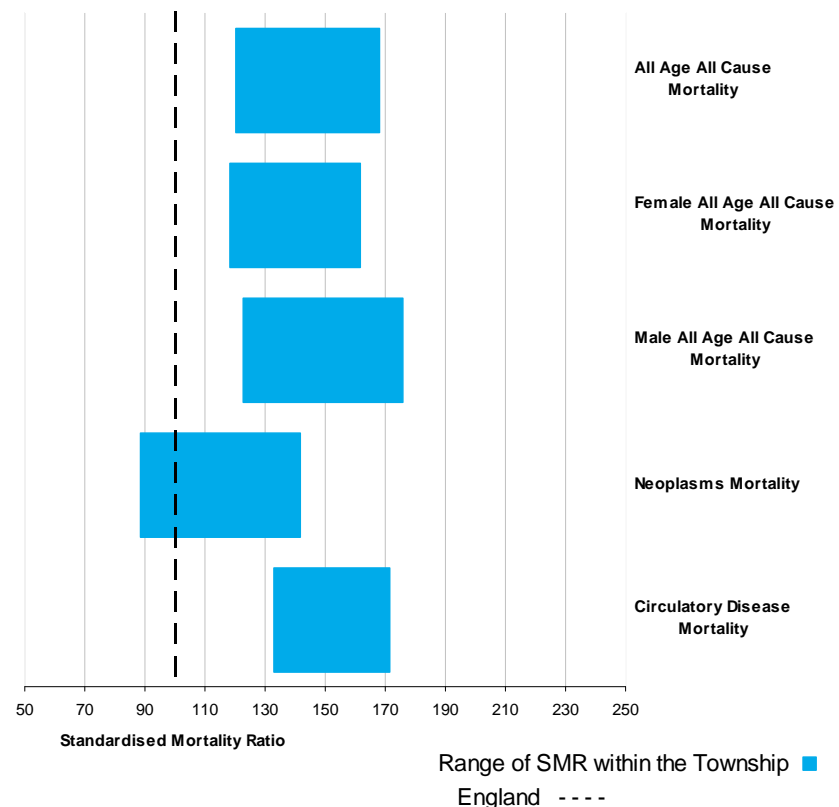


Mortality

All Age

- These standardised mortality ratios compare the expected levels of mortality with actual mortality.
- All age all cause mortality is high in Wigan North Township. The east and south areas have the highest ratios in this township.
- Both male and female mortality ratios are high across Wigan North Township with the highest ratios again occurring in the east and south areas of the township.
- Circulatory disease mortality ratios are high across Wigan North Township with the highest ratios found in the west, east and south areas.
- Mortality ratios from neoplasm are generally high in this township except for in the north where a low ratio indicates lower than expected mortality from this condition.

Range of standardised mortality ratios (SMR) between areas in Wigan North Township

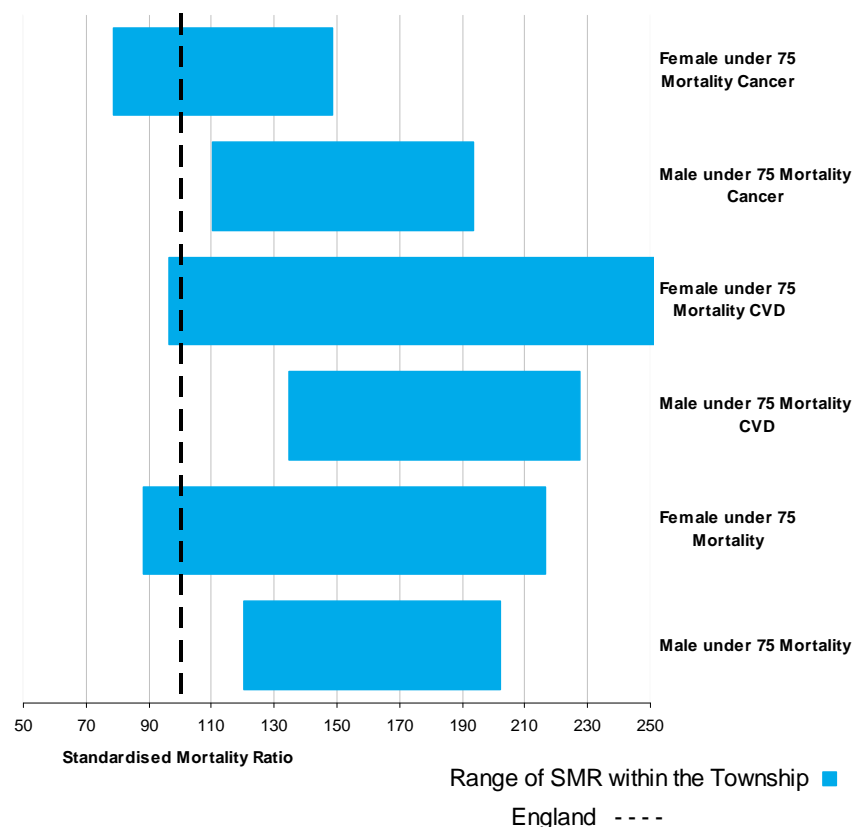


Mortality

Early Deaths (under 75 years old)

- These standardised mortality ratios compare the expected levels of mortality with actual mortality.
- The range of ratios for early deaths in Wigan North Township are wide for all indicators suggesting large differences in the health of the population of this township.
- The highest ratios tend to be found in west, east and south of Wigan North Township except for cancer where the north is higher.
- Wigan North Township has a very broad range of ratios for under 75 female cardiovascular disease. The east and south areas of the township have significantly higher ratios than elsewhere in the township that are among the highest in Wigan Borough.
- The highest ratio for under 75 male cardiovascular mortality is found in the east of Wigan North Township. This area has one of the highest ratios in Wigan Borough.

Range of standardised mortality ratios (SMR) between areas in Wigan North Township highlighted



Summary Table

Shorthand used in this report		West	North	Central	East	South
MLSOA Code		E02001291	E02001292	E02001294	E02001295	E02001298
Lifestyle (Model based estimates)	1 Smoking (%)	30.9	16.3	26.4	39.6	38.1
	2 Obesity (%)	30.8	20.7	24	31.4	29.8
	3 Consumption of Fruit and Vegetables (%)	17.2	24.9	20.5	15.5	15.5
	4 Binge Drinking (%)	24.2	22.3	26.2	26.9	26.7
Disease (Indirectly Standardised Ratios)	5 Self Harm	125.51	65.2	121.45	170	177.91
	6 Mental Health Conditions	98.28	83.83	108.96	167.81	129.5
	7 COPD	184.38	101.58	172.88	276.48	294.7
	8 Asthma	166.81	116.69	154.93	229.38	225.07
	9 Stroke	142.34	128.66	172.74	149.73	131.66
	10 Coronary Heart Disease	154.31	119.52	161.15	165.06	168.27
	11 Cardiovascular Disease	140.87	123.49	146.51	155.7	163.24
	12 Diabetes	161.5	99.7	152.34	168.63	199.41
	13 Lung Cancer	100.42	82.51	104.47	178.67	224.53
	14 Cervical Cancer	24.8	86.47	46.18	82.95	97.93
	15 Breast Cancer	85.93	105.88	97.18	91.62	104.43
	16 Alcohol Specific Conditions	160.72	109.14	164.86	283.97	208.67
Mortality All Age (Standardised Mortality Ratios)	17 AAACM	130.62	120.24	144.92	168.07	158.45
	18 AAACM - Males	138.75	122.59	156.51	175.61	165.88
	19 AAACM - Females	122.57	118.28	136.3	161.94	152.89
	20 Neoplasms Mortality	112.08	88.6	135.39	136.72	141.92
	21 Circ. Disease Mortality	171.57	133.06	154.67	168.1	163.31
Mortality Early Deaths (Standardised Mortality Ratios)	22 <75 Male Mortality	142.05	120.13	152.82	202.02	178.51
	23 <75 Female Mortality	128.13	88.06	117.5	216.3	191.93
	24 <75 Male Cancer Mortality	128.28	110.36	161.72	184.54	193.45
	25 <75 Female Cancer Mortality	83.44	78.49	111.18	113.79	148.37
	26 <75 Male CVD Mortality	176.08	134.72	152.42	227.39	163.36
	27 <75 Female CVD Mortality	178.28	96.18	133.87	271.78	263.49

Further information:

The data in this report can be accessed and mapped via the Wigan local information system (W.I.S.D.O.M.) via <http://kinnear.wigan.gov.uk/iads/> Go to the data views section and access "Health Summary Data (MSOA)"

This data has been sourced from the North West Public Health Observatory (www.nwpd.net).

Contact Antoinette Egan,
antoinette.egan@alwpct.nhs.uk

1. Percentage Smoking (16+): ONS Synthetic estimate (2003-2005). 2. Percentage Obese (16+): ONS Synthetic estimate (2003-2005). 3. Percentage of Adults Eating 5 or More Portions of Fruit or Vegetables a Day (16+): ONS Synthetic estimate (2003-2005). 4. Percentage Binge Drinking (16+): ONS Synthetic estimate (2003-2005). 5. Self Harm: Hospitalised Incidence. Indirectly standardised ratio for emergency admission to hospital for self harm (2001-2005). 6. Mental Health Conditions: Hospitalised Prevalence. Indirectly standardised ratio for emergency or elective admission to hospital for mental health conditions (2001-2005). 7. Chronic Obstructive Pulmonary Disease: Hospitalised Prevalence. Indirectly standardised ratio for emergency or elective admission to hospital for chronic obstructive pulmonary disease (2001-2005). 8. Asthma: Hospitalised Prevalence. Indirectly standardised ratio for emergency or elective admission to hospital for alcohol specific conditions (2001-2005). 9. Stroke: Hospitalised Incidence. Indirectly standardised ratio for emergency admission to hospital for stroke (2001-2005). 10. Coronary Heart Disease: Hospitalised Incidence. Indirectly standardised ratio for emergency admission to hospital for coronary heart disease (2001-2005). 11. Cardiovascular Conditions: Hospitalised Incidence. Indirectly standardised ratio for emergency admission to hospital for cardiovascular conditions (2001-2005). 12. Diabetes: Hospitalised Prevalence. Indirectly standardised ratio for emergency or elective admission to hospital for diabetes (2001-2005). 13. Lung Cancer: Hospitalised Prevalence. Indirectly standardised ratio for emergency or elective admission to hospital for lung cancer conditions (2001-2005). 14. Cervical Cancer- Female: Hospitalised Prevalence. Indirectly standardised ratio for emergency or elective admission to hospital for cervical cancer (2001-2005). 15. Breast Cancer - Female: Hospitalised Prevalence. Indirectly standardised ratio for emergency or elective admission to hospital for breast cancer (2001-2005). 16. Alcohol Specific Conditions: Hospitalised Prevalence. Indirectly standardised ratio for emergency or elective admission to hospital for alcohol specific conditions (2001-2005). 17. All Age All Cause Mortality (AAACM). Indirectly standardised ratio. All persons who died of any cause (2001-2005). 18. All Age All Cause Mortality - Females. Indirectly standardised ratio. All males all ages who died from all causes (2001-2005). 19. All Age All Cause Mortality - Males. Indirectly standardised ratio. All males all ages who died from all causes (2001-2005). 20. Neoplasms Mortality. Indirectly standardised ratio. All persons who died of any neoplasm (2001-2005). 21. Circulatory Disease Mortality. Indirectly standardised ratio. All persons who died of circulatory disease (2001-2005). 22. Under 75 Years Mortality from All Causes - Females. Indirectly standardised ratio. All females aged under 75 years who died from all causes (2001-2005). 23. Under 75 Years Mortality from All Causes - Males. Indirectly standardised ratio. All males aged under 75 years who died from all causes (2001-2005). 24. Under 75 Mortality from CVD - Females. Indirectly standardised ratio. All females aged under 75 years who died of cardiovascular disease (2001-2005). 25. Under 75 Mortality from CVD - Males. Indirectly standardised ratio. All males aged under 75 years who died of cardiovascular disease (2001-2005). 26. Under 75 Years Mortality from Cancer - Females. Indirectly standardised ratio. All females aged under 75 years who died of cancer (2001-2005). 27. Under 75 Years Mortality from Cancer - Males. Indirectly standardised ratio. All males aged under 75 years who died of cancer (2001-2005).