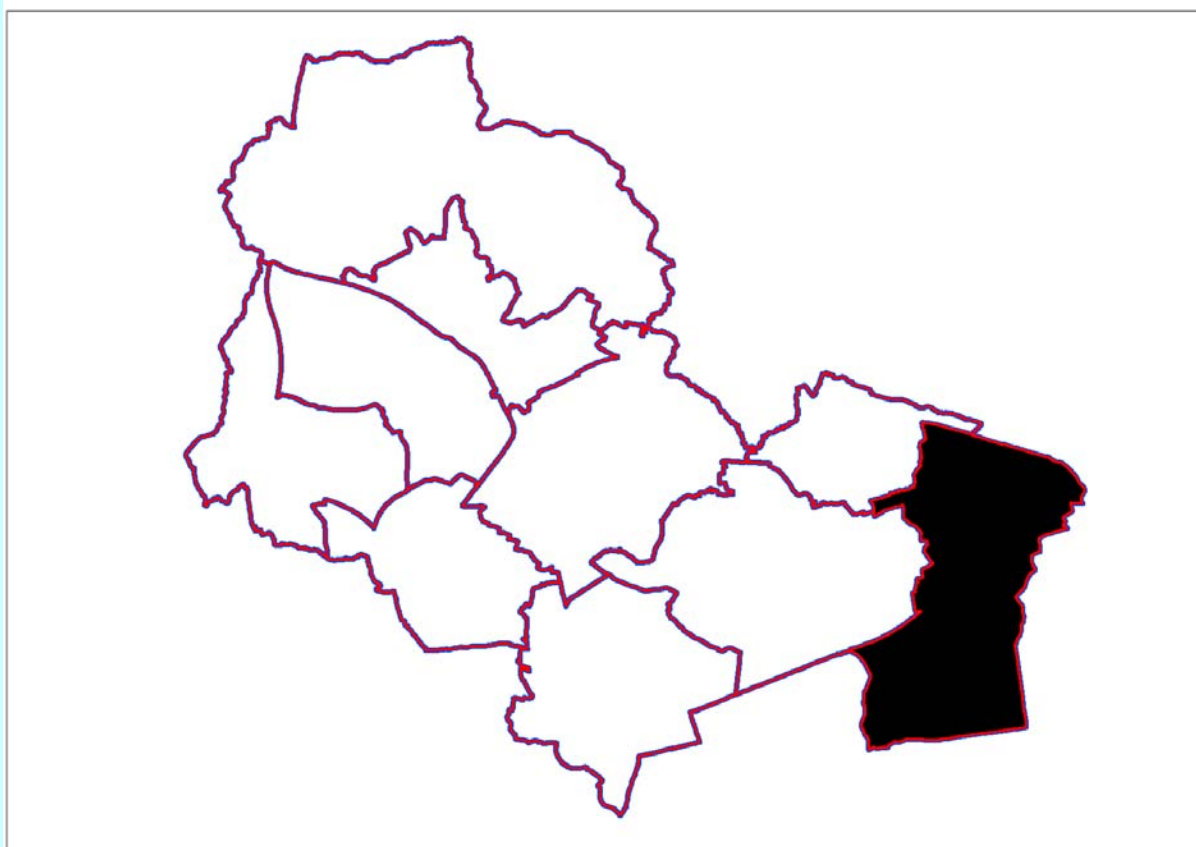


Health Profile

Tyldesley Astley Township



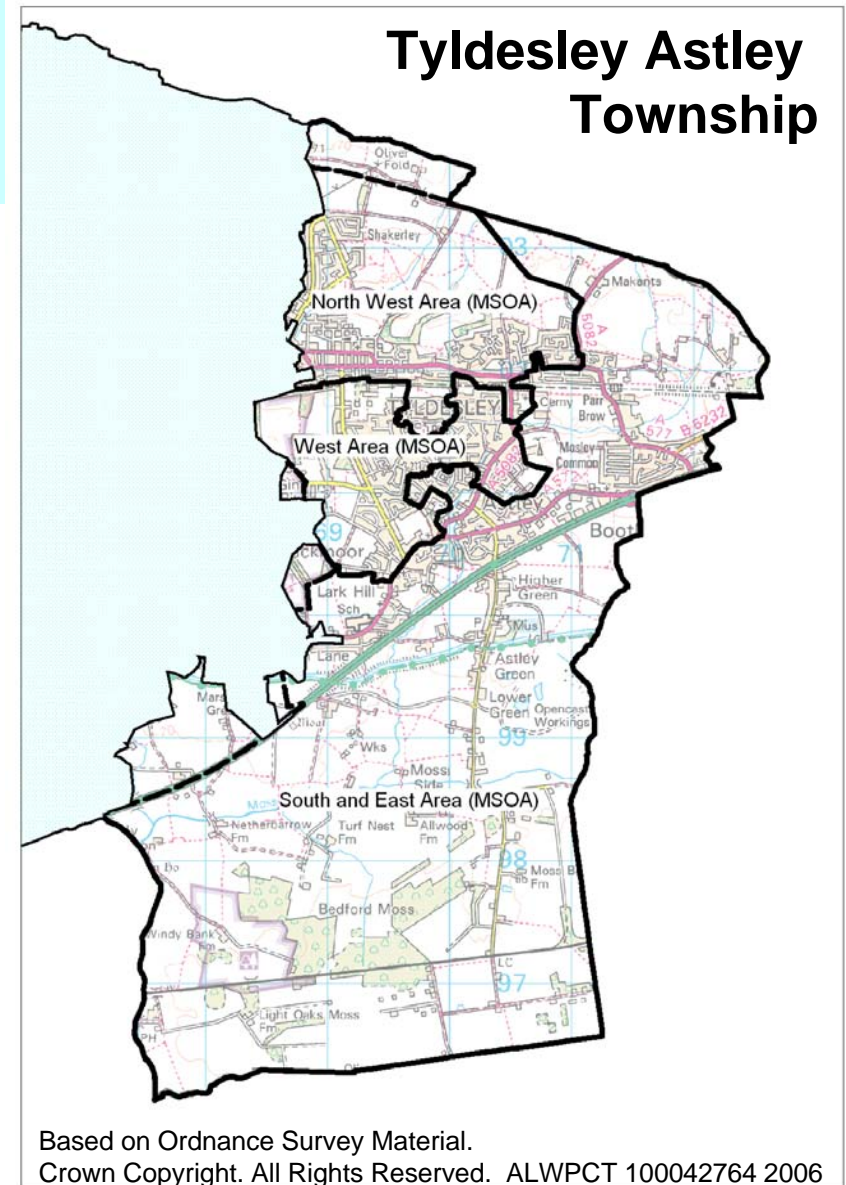
Description

General

- Tyldesley Astley Township is in the south east of the borough bordering Atherton and Leigh Townships to the west and Salford District to the east.
- Tyldesley Astley Township includes the Tyldesley and Astley Mostley Common electoral wards.

Facilities and Services:

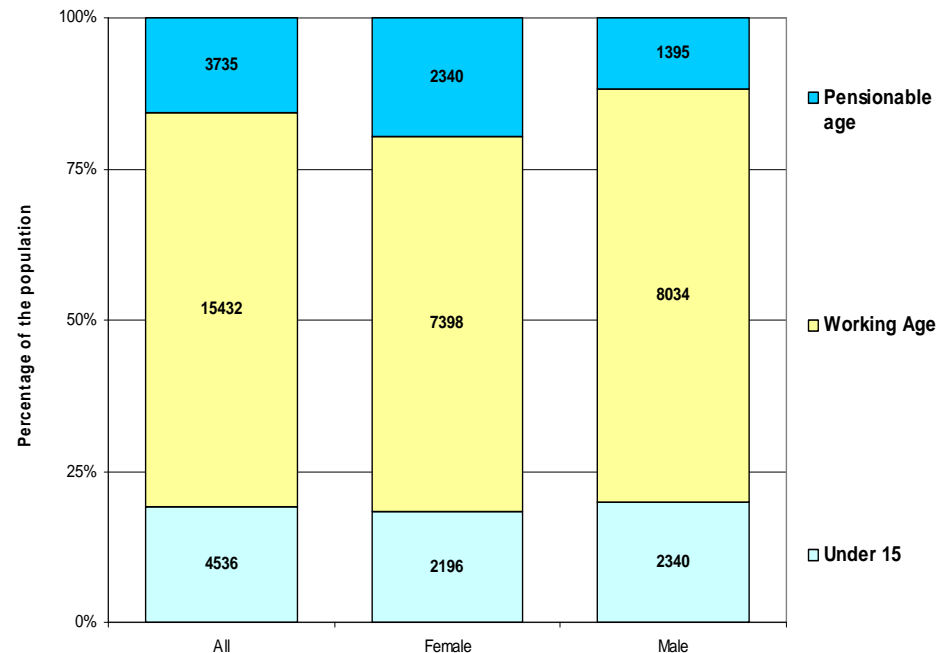
- 7 General Practices
- 2 Dental surgeries
- 4 Pharmacies
- The Health Trainer Service, Smoking Cessation Service and Lose Weight Feel Great all operate in this area.



Population

- Tyldesley Astley Township has a population of 23,703.
- This is the fifth lowest resident population of all the townships in the borough and about half the size of the most heavily populated township.
- Tyldesley Astley Township has the second lowest population density of all of Wigan's townships at 1,034 residents per square kilometre. Most of the population is concentrated in the northern area of the town
- 11,934 (50.3%) of the residents are female and 11,769 (49.7%) are male.
- A high proportion of women in Tyldesley Astley Township are at retirement age.

Population breakdown for Tyldesley Astley Township



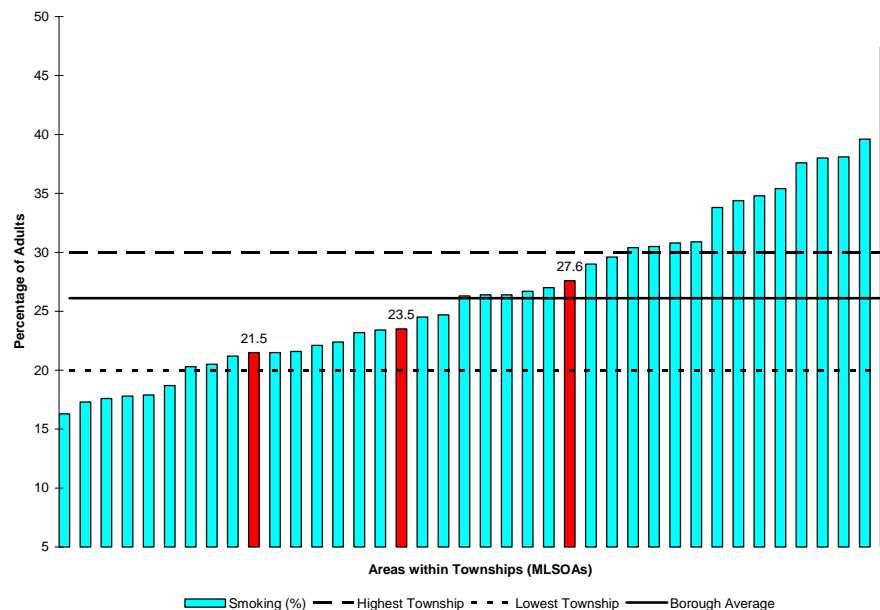
Based on ONS mid 2007 population estimates for middle layer super output areas. Pensionable age assumes Male retirement age of 65 and female of 60.

Lifestyle

Smoking

- 26% of the adult population of Wigan borough are smokers compared to only 24% in England.
- The Health and Lifestyle Survey (2005/2006) suggests that younger residents are more likely to be current smokers than older residents and men are more likely to have smoked than women.
- Tyldesley Astley Township has an average smoking rate slightly lower than the borough average and in line with the England average.
- Estimates for smoking across Tyldesley Astley Township range from 21.5% to 27.6%.
- One area in the north west of Tyldesley Astley Township has a smoking proportion higher than the Wigan average at 27.6%.

Percentage of adults who smoke across Wigan Borough with areas in Tyldesley Astley Township highlighted

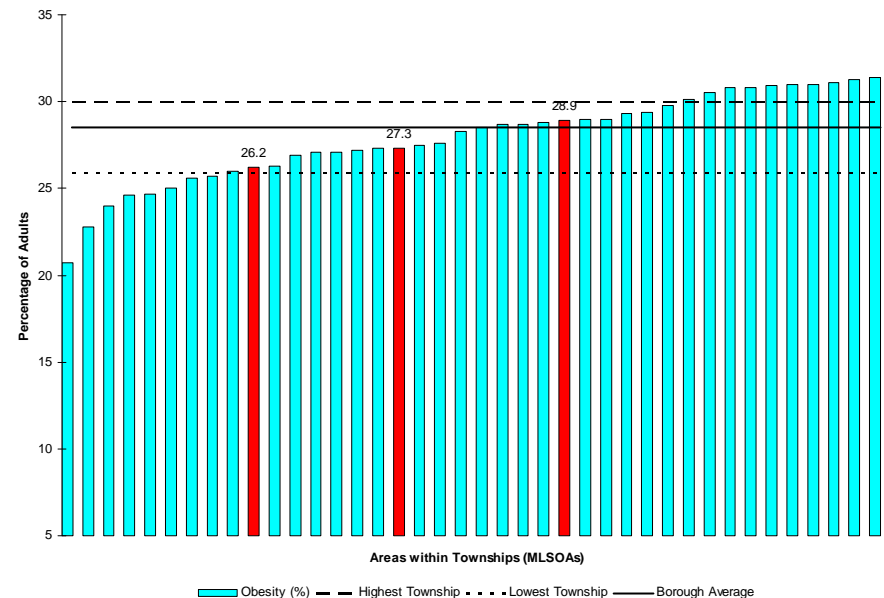


Lifestyle

Obesity

- Levels of obesity in Wigan borough are much higher than the national average.
- 28.5% of the population of Wigan borough are obese compared to 23.6% of the England population as a whole.
- Levels of obesity in Tyldesley Astley Township at 27% are broadly similar to the borough average.
- There is little variation in levels of obesity across this Township.

Percentage of obese adults across Wigan Borough with areas in Tyldesley Astley Township highlighted

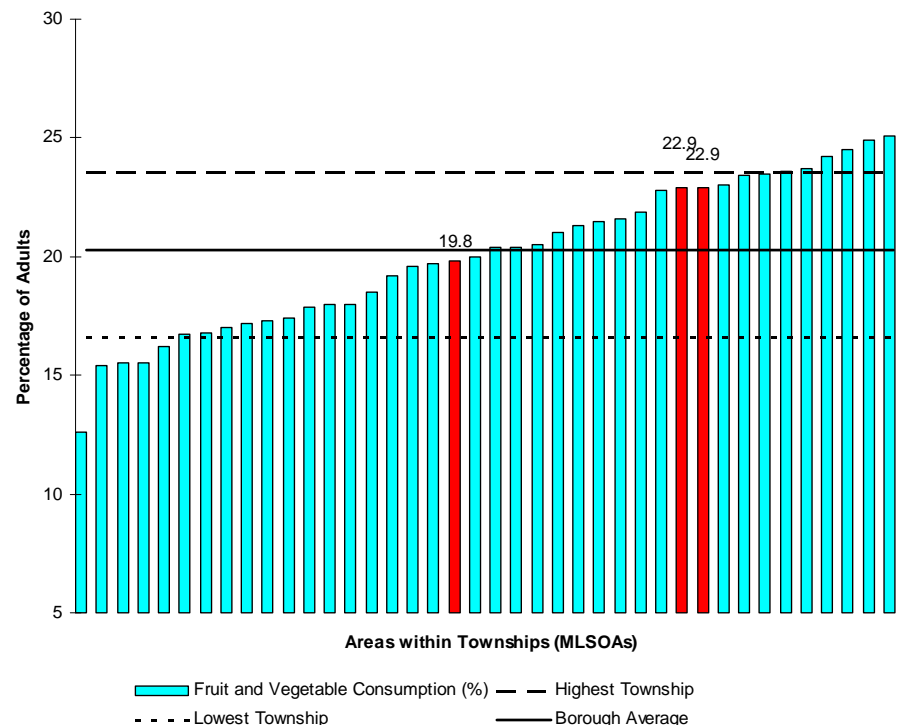


Lifestyle

Diet

- Fewer adults in Wigan have a healthy diet compared to England as a whole.
- The national average for healthy eating is 26.3%
- Estimates for healthy eating in Wigan borough suggest that only 20% of the adult population overall eat the recommended five daily portions of fruit and vegetables.
- 22% of adults in Tyldesley Astley Township eat healthily. This is a little higher than the Wigan Borough average of 20%.
- The range between the areas in Tyldesley Astley Township is 3% with 19.8% of residents eating healthily in the lowest and 22.9% in the highest area for which we have estimates.
- The north area of Tyldesley Astley Township has the lowest percentage of healthy eaters according to estimates.

Percentage of adults who eat healthily across Wigan Borough with areas in Tyldesley Astley Township highlighted

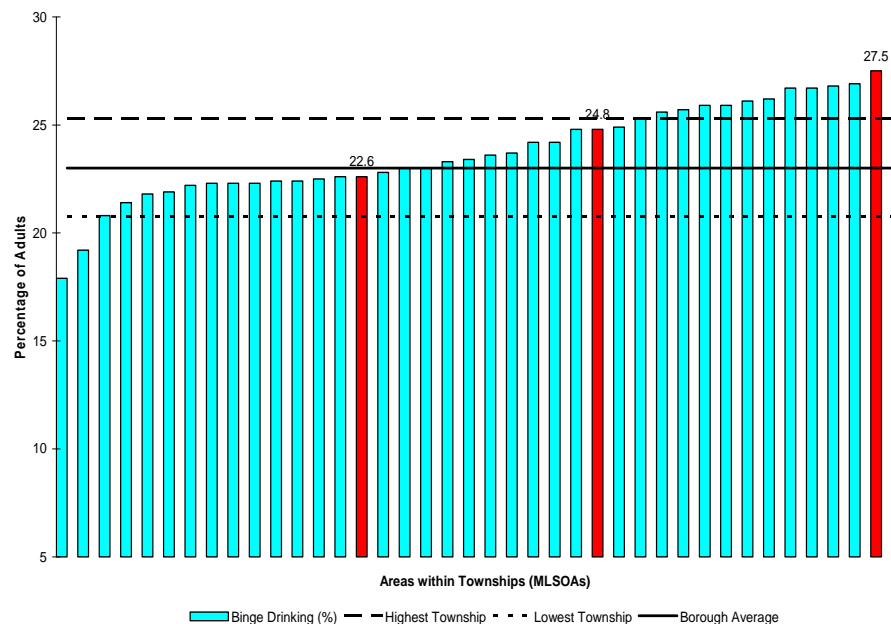


Lifestyle

Alcohol

- Estimates for adult binge drinking in Wigan borough suggest that 23% of the population binge drink. This is higher than the England average of 18%.
- Estimates suggest that 24.2% of Tyldesley Astley Township adults binge drink. This percentage varies from 22.6% to 27.5% within the Township.
- The north of Tyldesley Astley Township has an estimated binge drinking percentage that is considerably above the borough average at 27.5%. This is the second highest in the borough.

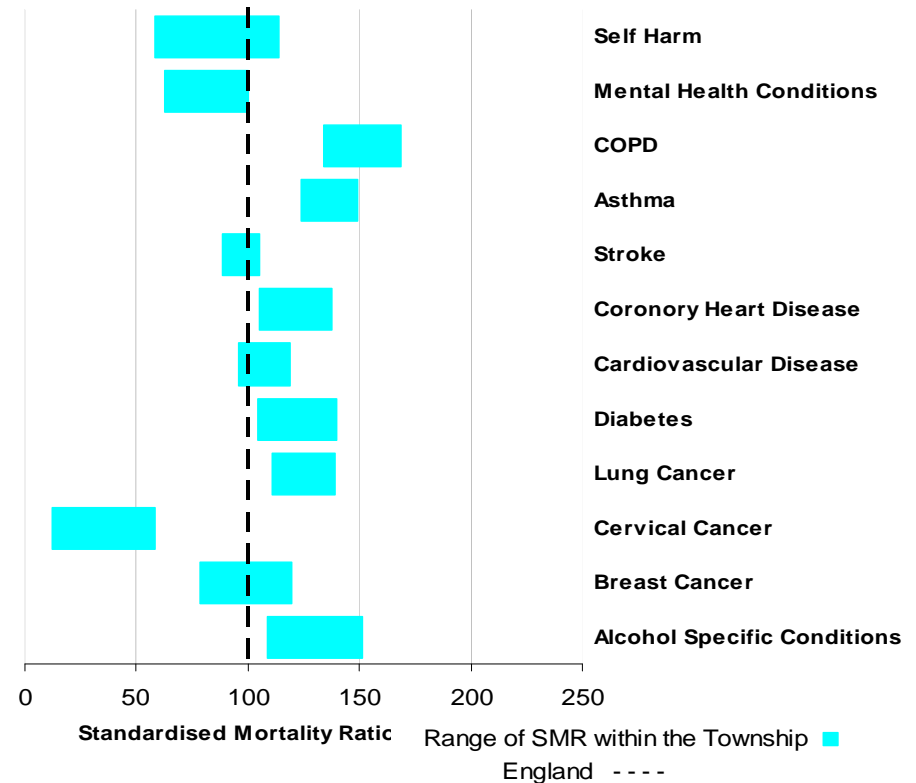
Percentage of adults who binge drink across Wigan Borough with areas in Tyldesley Astley Township highlighted



Disease

- Ratios compare the expected disease levels with actual disease levels.
- Tyldesley Astley Township has high levels of chronic obstructive pulmonary disease, asthma and lung cancer.
- Cardiovascular disease, coronary heart disease, diabetes and alcohol related admissions to hospital are also high.
- Cervical cancer is much lower than would be expected in a similar population.
- The highest ratios for disease tend to be found in the north of the Township with the exception of breast cancer and lung cancer.
- The highest ratios for breast cancer and lung cancer are all found in the west of Tyldesley Astley Township .

Range of standardised ratios between areas in Tyldesley Astley Township

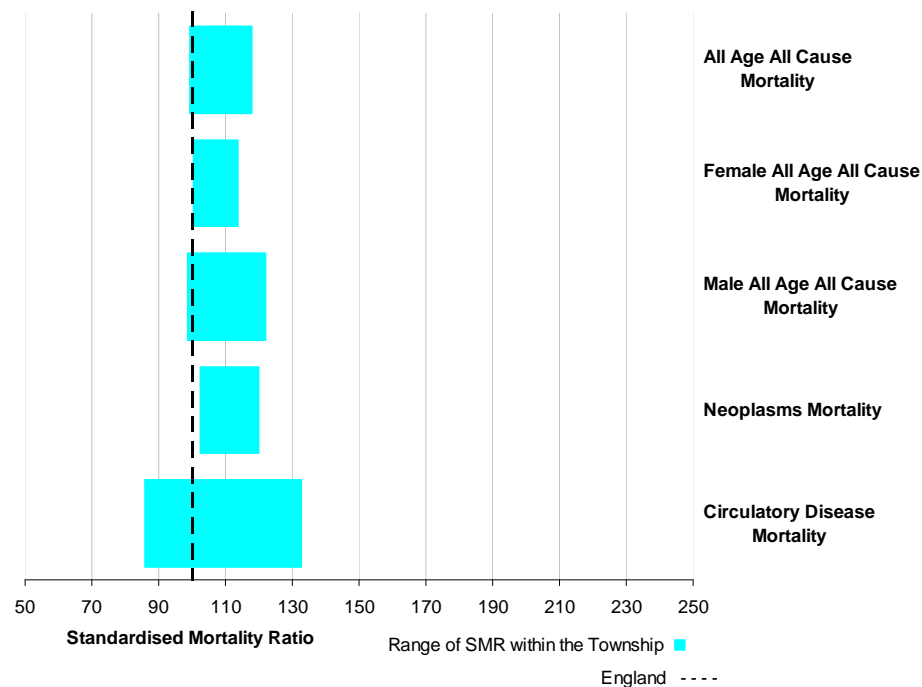


Mortality

All Age

- Ratios compare the expected levels of disease with actual disease levels.
- The range of ratios between areas in Tyldesley Astley Township is small for all age all cause mortality.
- The area in the north of the Tyldesley Astley Township has the highest ratio for all age all cause mortality (both males and females).
- The largest range of ratios between areas in Tyldesley Astley Township is for circulatory disease. The highest ratio for circulatory disease is in the north of the Township.
- The area with the highest cancer mortality ratio is in the south and east of Tyldesley Astley Township .

Range of standardised mortality ratios (SMR) between areas in Tyldesley Astley Township

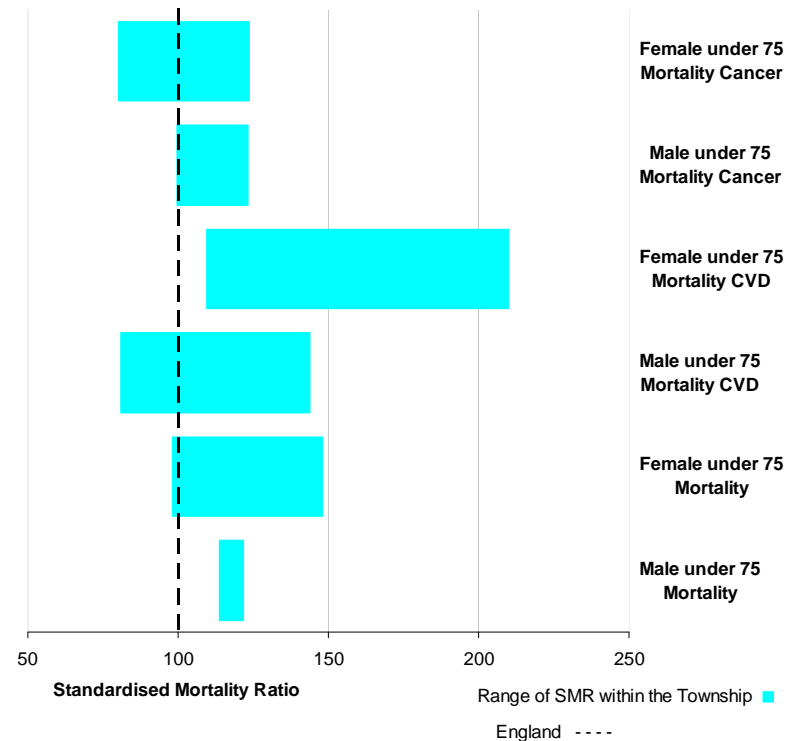


Mortality

Early Deaths (under 75 years old)

- Ratios compare the expected levels of disease with actual disease levels.
- Overall the range of female early deaths is greater than male early deaths in Tyldesley Astley Township .
- The north of Tyldesley Astley Township has high under 75 mortality for women and men.
- Female mortality from cardiovascular disease is much higher than expected in the north of Tyldesley Astley Township . Male mortality from cardiovascular disease is also high in this area.

Range of standardised mortality ratios (SMR) between areas in Tyldesley Astley Township highlighted



Summary Table

Shorthand used in this report		North	West	South & East	
MLSOA Code		E02001311	E02001314	E02001315	
Lifestyle (Model based estimates)	1 Smoking (%)	27.6	23.5	21.5	
	2 Obesity (%)	27.6	27.1	27.3	
	3 Consumption of Fruit and Vegetables (%)	19.8	22.9	22.9	
	4 Binge Drinking (%)	27.5	24.8	22.6	
Disease (Indirectly Standardised Ratios)	5 Self Harm	113.71	58.4	60.96	
	6 Mental Health Conditions	99.8	62.42	73.97	
	7 COPD	168.28	139.16	134.32	
	8 Asthma	149.23	123.89	130.02	
	9 Stroke	105.05	101.85	88.7	
	10 Coronary Heart Disease	137.87	114	104.95	
	11 Cardiovascular Disease	118.81	104.74	96.04	
	12 Diabetes	139.99	111.72	104.54	
	13 Lung Cancer	110.72	139.27	114.57	
	14 Cervical Cancer	32.98	58.43	11.91	
	15 Breast Cancer	95.25	119.5	79.86	
	16 Alcohol Specific Conditions	151.48	112.95	108.92	
	Mortality All Age (Standardised Mortality Ratios)	17 AAACM	117.9	99.46	104.02
		18 AAACM - Males	121.97	98.67	105
		19 AAACM - Females	113.94	100.51	102.98
		20 Neoplasms Mortality	102.47	112.41	120.05
21 Circ. Disease Mortality		132.84	102.63	85.83	
Mortality Early Deaths (Standardised Mortality Ratios)	22 <75 Male Mortality	121.68	113.56	113.72	
	23 <75 Female Mortality	148.28	98.2	110.13	
	24 <75 Male Cancer Mortality	99.59	123.13	122	
	25 <75 Female Cancer Mortality	100.71	80.16	123.56	
	26 <75 Male CVD Mortality	143.82	106.52	80.8	
	27 <75 Female CVD Mortality	210.04	120.65	109.62	

Further information:

The data in this report can be accessed and mapped via the Wigan local information system (W.I.S.D.O.M.) via <http://kinnear.wigan.gov.uk/iads/> Go to the data views section and access "Health Summary Data (MSOA)"

This data has been sourced from the North West Public Health Observatory (www.nwphd.net).

Contact Antoinette Egan,
antoinette.egan@alwpcn.nhs.uk

1. Percentage Smoking (16+): ONS Synthetic estimate (2003-2005). 2. Percentage Obese (16+): ONS Synthetic estimate (2003-2005). 3. Percentage of Adults Eating 5 or More Portions of Fruit or Vegetables a Day (16+): ONS Synthetic estimate (2003-2005). 4. Percentage Binge Drinking (16+): ONS Synthetic estimate (2003-2005). 5. Self Harm: Hospitalised Incidence. Indirectly standardised ratio for emergency admission to hospital for self harm (2001-2005). 6. Mental Health Conditions: Hospitalised Prevalence. Indirectly standardised ratio for emergency or elective admission to hospital for mental health conditions (2001-2005). 7. Chronic Obstructive Pulmonary Disease: Hospitalised Prevalence. Indirectly standardised ratio for emergency or elective admission to hospital for chronic obstructive pulmonary disease (2001-2005). 8. Asthma: Hospitalised Prevalence. Indirectly standardised ratio for emergency or elective admission to hospital for alcohol specific conditions (2001-2005). 9. Stroke: Hospitalised Incidence. Indirectly standardised ratio for emergency admission to hospital for stroke (2001-2005). 10. Coronary Heart Disease: Hospitalised Incidence. Indirectly standardised ratio for emergency or elective admission to hospital for coronary heart disease (2001-2005). 11. Cardiovascular Conditions: Hospitalised Incidence. Indirectly standardised ratio for emergency admission to hospital for cardiovascular conditions (2001-2005). 12. Diabetes: Hospitalised Prevalence. Indirectly standardised ratio for emergency or elective admission to hospital for diabetes (2001-2005). 13. Lung Cancer: Hospitalised Prevalence. Indirectly standardised ratio for emergency or elective admission to hospital for lung cancer conditions (2001-2005). 14. Cervical Cancer- Female: Hospitalised Prevalence. Indirectly standardised ratio for emergency or elective admission to hospital for cervical cancer (2001-2005). 15. Breast Cancer - Female: Hospitalised Prevalence. Indirectly standardised ratio for emergency or elective admission to hospital for breast cancer (2001-2005). 16. Alcohol Specific Conditions: Hospitalised Prevalence. Indirectly standardised ratio for emergency or elective admission to hospital for alcohol specific conditions (2001-2005). 17. All Age All Cause Mortality (AAACM). Indirectly standardised ratio. All persons who died of any cause (2001-2005). 18. All Age All Cause Mortality - Females. Indirectly standardised ratio. All males all ages who died from all causes (2001-2005). 19. All Age All Cause Mortality - Males. Indirectly standardised ratio. All males all ages who died from all causes (2001-2005). 20. Neoplasms Mortality. Indirectly standardised ratio. All persons who died of any neoplasm (2001-2005). 21. Circulatory Disease Mortality. Indirectly standardised ratio. All persons who died of circulatory disease (2001-2005). 22. Under 75 Years Mortality from All Causes - Females. Indirectly standardised ratio. All females aged under 75 years who died from all causes (2001-2005). 23. Under 75 Years Mortality from All Causes - Males. Indirectly standardised ratio. All males aged under 75 years who died from all causes (2001-2005). 24. Under 75 Mortality from CVD - Females. Indirectly standardised ratio. All females aged under 75 years who died of cardiovascular disease (2001-2005). 25. Under 75 Mortality from CVD - Males. Indirectly standardised ratio. All males aged under 75 years who died of cardiovascular disease (2001-2005). 26. Under 75 Years Mortality from Cancer - Females. Indirectly standardised ratio. All females aged under 75 years who died of cancer (2001-2005). 27. Under 75 Years Mortality from Cancer - Males. Indirectly standardised ratio. All males aged under 75 years who died of cancer (2001-2005).