

New Ways of Working 3

Children's Trust
Localities information



New Ways of Working 3

Transforming services for children, young people and their families

Background

Our vision for locality working focuses on the development, with our partners, of co-located, integrated services serving a community. We are currently transforming existing services to be more efficient, effective and responsive to local needs and be more accountable to children young people and their families. We are building on the firm foundations already established through the Every Child Matters framework and our commitment to implement common processes. Against this backdrop we also have the policy changes brought in by the coalition government and the immediate reduction of Council funding which has reinforced the need to redesign the services we offer.

To ensure an approach that involved consultation with our partners and key stakeholders a Transforming Children's Services project board was established in the late summer. There are four sub groups to develop a series of models for an integrated, targeted and specialist service for 0-10 years and 10-19 years. Part of the remit is also to identify the underpinning infrastructure required to deliver this service. The new models will be developed taking into account the local government funding settlement and the best available evidence of what works.

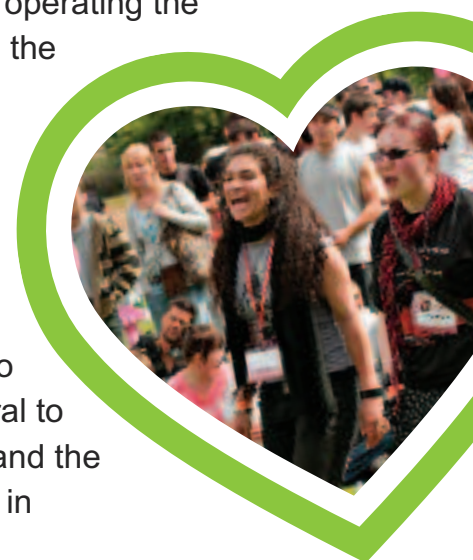
The new services will be based on local intelligence that forms the basis of a locality profile and will focus on improved outcomes

for children and young people. Whilst we have an emerging framework, the information from current services tell us that each locality will need to have a slightly different offer. Some of the data currently being used to inform the development and subsequent resource allocation includes:

- Data from the range of early intervention services currently provided
- Health Visiting activity
- Social Care referral, assessment and looked after children data
- Child Poverty Needs Assessment
- Joint Strategic Needs Assessment.

Our aim is to work through and address the challenges that integration can bring around culture, governance and finance, but ensure that families shape the delivery of services and that we demonstrate value for money.

Once the system is operating the intention is to refine the delivery model through intelligence led analysis of need, clear priority setting and effective commissioning which should lead to a reduction in referral to specialist services and the capacity to reinvest in prevention.



New Ways of Working 3

Principles

It is worth being explicit about the agreed underpinning principles of the new Service which have been endorsed by the Children's Trust Partnership, which are:

- The services will be needs led and outcome based.
- We will be targeting services to those that are most likely to require specialist interventions in the future.
- The delivery and planning model will be for integrated and locality based partnership services.
- Services will be delivered through a single pathway with one referral form, evidence based programmes and joint assessments.
- We will be "working with" the families, children and young people as opposed to "working for" them.

This model described below is not comprehensive and the main emphasis is on types of intervention and not on detail of services. It is also worth noting that support for children and young people at all key transition points (especially from primary to secondary) is a feature of the service design. It is commonly acknowledged that transitions for vulnerable young people and those at risk can be especially traumatic and higher risk in terms of future outcomes.

Therefore, a feature of the service redesign is to offer appropriate one to one support to keep young people engaged, raise aspirations and prevent them becoming involved with or in need of specialist services such as the Youth Offending Team.

The proposed early intervention locality model for 0-19 years old

The key features of the proposed model include:

- A Locality Area Manager accountable for the service delivery and responsibility for engaging key partners
- A core team of workers with a mix of professional background's and expertise who will operate generically but with key skills used to ensure effective engagement with children, young people and their families
- Other specialists in the core team that will support interventions including social care.
- Part of the remit of the core team will be to prevent escalation and families needing the more intensive support of social care. The team will also provide support



New Ways of Working 3

0-19 Pathway

Age	Universal	Targeted Support	Targeted borough wide	Specialist support
0-19	Information/advice Signposting Stage checks "Preconception plan" Immunisation/vaccination Screening Careers Education Programme IAG Positive activities National Citizenship Scheme Learning providers Family Information Service (FIS)	Social Environmental Play and positive activities Health Behaviour Offer <ul style="list-style-type: none"> • engagement • enrichment • prevention • positive activities • youth support 	Young carers Parenting Domestic violence support Behaviour modification Mental health Additional needs Targeted Youth Support for vulnerable groups Youth Service SEN support, including EPS YPDAT Targeted engagement Family Intervention Disability Services	Adult alcohol and mental Health service SEN CAMHS Probation Social care Family Intervention Programme Social care YOT EWS Court Team
	Coping/thriving	Just coping	Just coping plus	Chaotic



Panel to manage escalation and de-escalation

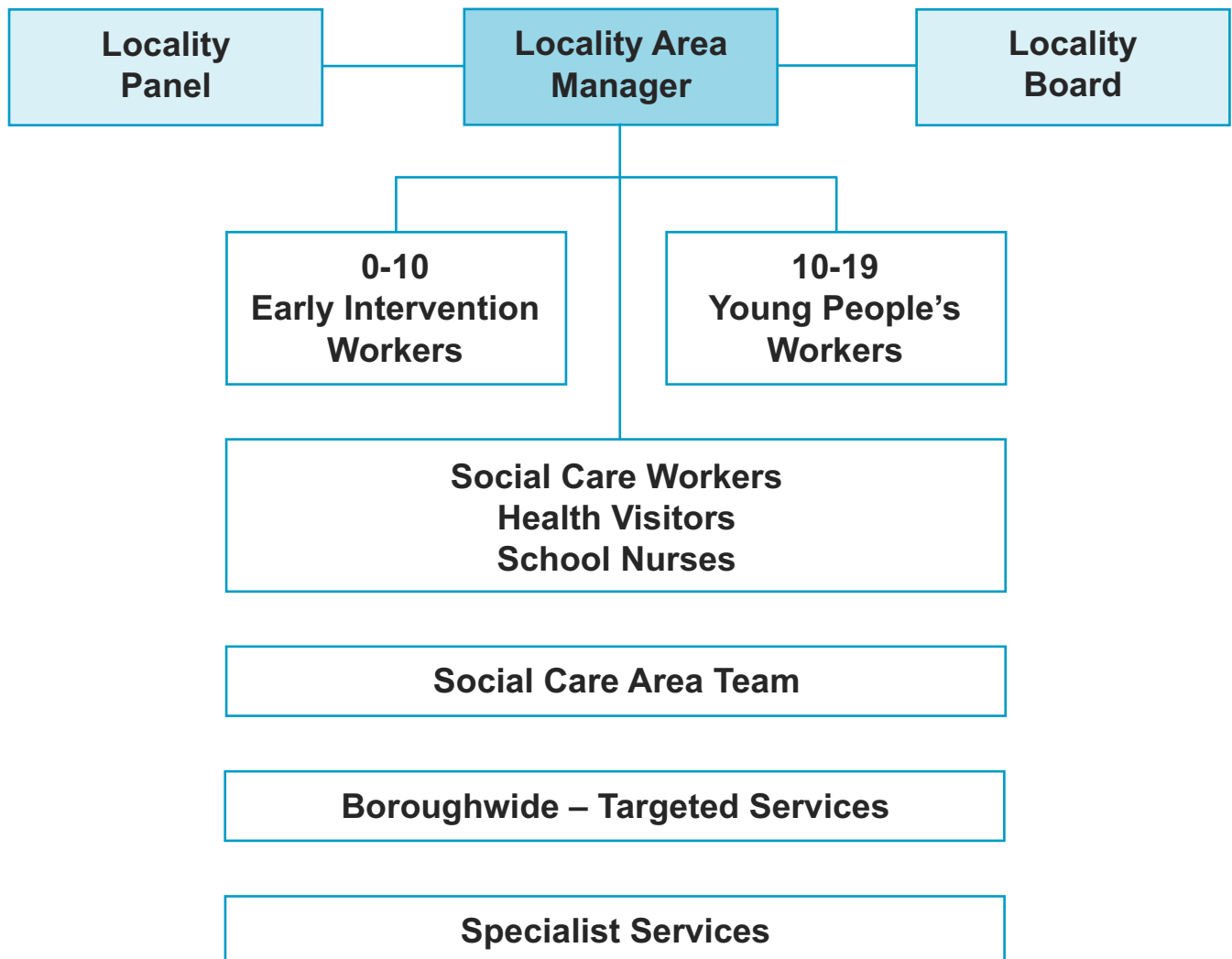
New Ways of Working 3

packages for those moving down the threshold model from social care.

- Access to borough wide targeted support services where it is more efficient to deliver on a borough wide basis
- Access to specialist services that will prevent children and young people moving into social care or YOT systems.

- A panel that will support workers and ensure interventions are effective and appropriate and to address any problem resolution issues
- A locality board that will be responsible for performance management and that will identify priorities in the area to influence commissioning arrangements and resource allocation.

Proposed Early Intervention Locality Area Model for 0-19 years old



New Ways of Working 3

Family Information Services

The family service directory is an easy-to-use, online directory of services for children, young people aged 0-19 (up to 24 years for those with additional needs) and their families.

www.wiganfis.org.uk

<http://wisdom.wiganlife.com>

It offers information for parents and carers on local organisations and services including:

- Parenting support
- Health services
- Leisure and family activities
- Support for disabled children
- Education and learning
- Children's Centres
- Work and training

We can make this information available in other formats and languages on request.

Contact:

Wigan Council,
Children and Young People's Services,
Progress House,
Westwood Park Drive,
Wigan,
WN3 4HH

Phone: 01942 486004 (Internal 86004).

