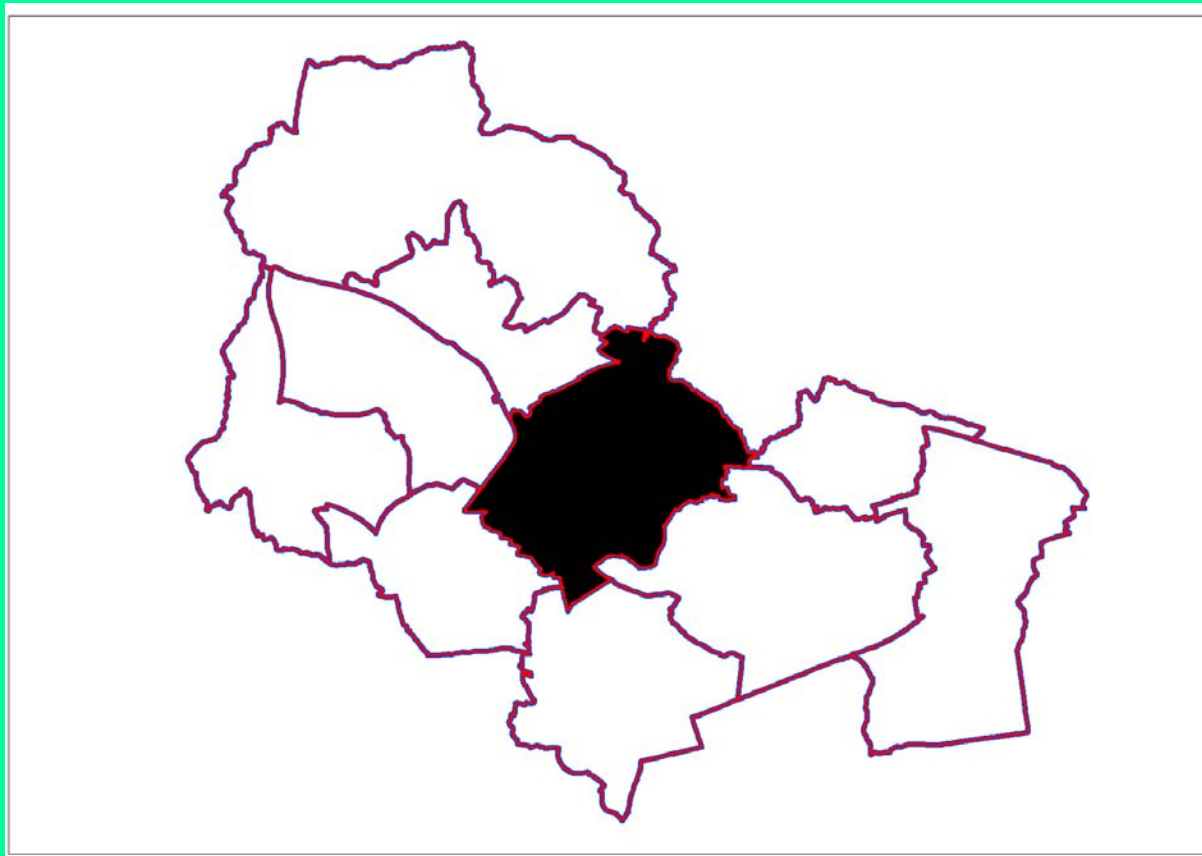


Health Profile

Hindley Abram Township



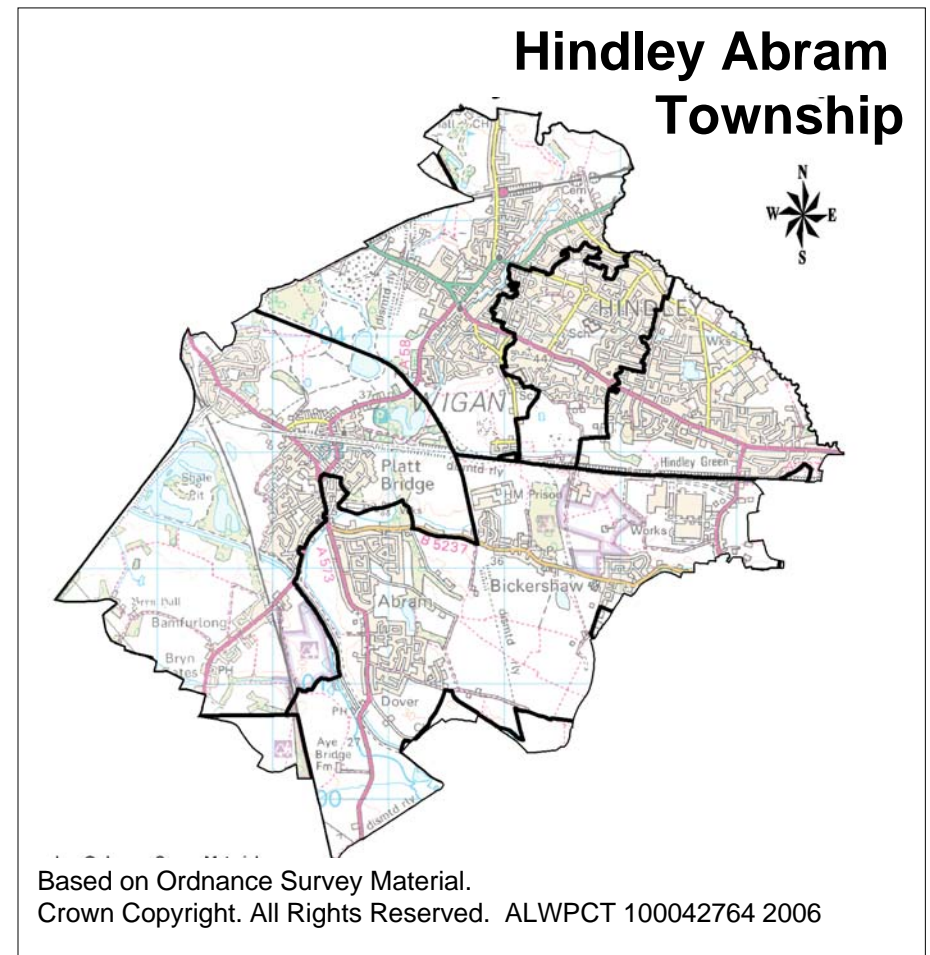
Description

General

- Hindley Abram Township is in the middle of the borough bordering Wigan North, Wigan South and Ashton Bryn Leigh and Atherton Townships and the district of Bolton to the north.
- Hindley Abram Township includes the electoral wards of Hindley, Hindley Green and Abram.

Facilities and Services:

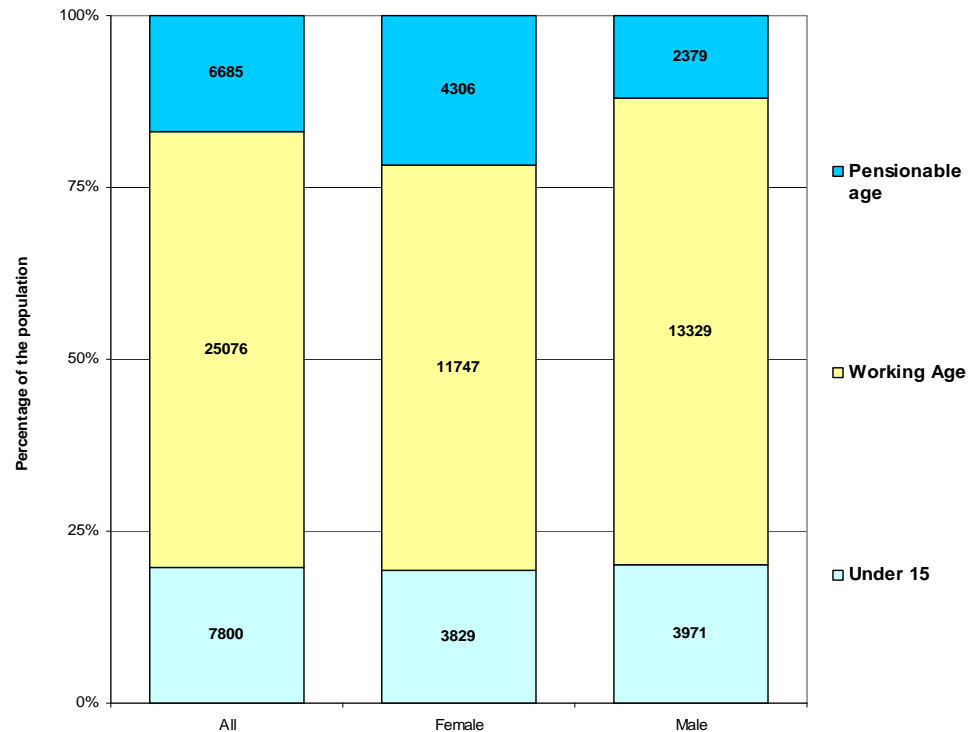
- 5 General Practices
- 2 Dental surgeries
- 4 Pharmacies
- The Health Trainer Service, Smoking Cessation Service and Lose Weight Feel Great all operate in this area.



Population

- Hindley Abram Township has a population of 39,561.
- This is in the second highest population of any of the boroughs townships.
- Hindley Abram Township has population density of 1,788 residents per square kilometre. This is in the middle range of the townships.
- 19,882 (50.26%) of the residents of Hindley Abram Township are female and 19,679 (49.74%) are male.
- Hindley Abram Township has one of the lowest proportions of its population at retirement age when compared to other townships in the borough. There are about 2000 more women (4,306) at retirement age than men (2,379) representing 21.66% and 12.9% of the townships population respectively.

Population breakdown for Hindley Abram Township



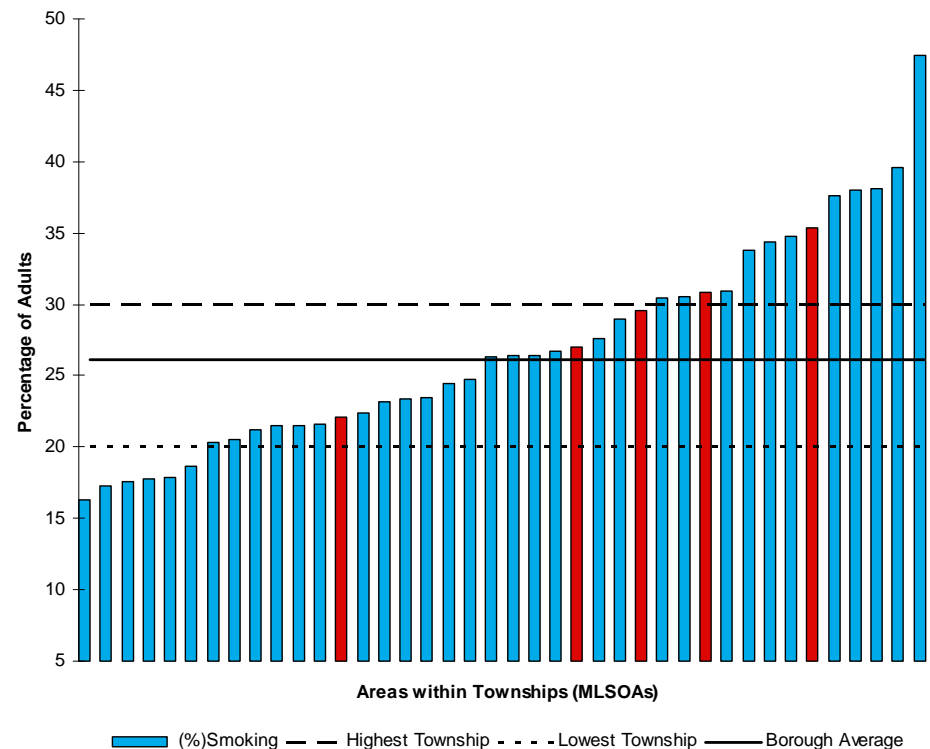
Based on ONS mid 2007 population estimates for middle layer super output areas. Pensionable age assumes male retirement age of 65 and female of 60.

Lifestyle

Smoking

- 26% of the adult population of Wigan borough are smokers compared with 24% in England overall.
- The Health and Lifestyle Survey (2005/2006) suggests that younger residents are more likely to be current smokers than older residents and men are more likely to have smoked than women.
- Estimates suggest that Hindley Abram Township has an average smoking percentage of 29%. This is one of the highest of any township and is higher than both the borough and England averages.
- There is a broad range of estimates for smoking across Hindley Abram Township ranging from 22.1% to 35.4%.
- All but one of the areas in Hindley Abram Township have a smoking proportion that is higher than the Wigan borough average.
- At 35.4% the west of Hindley Abram Township has the highest estimate for smoking in this township.

Percentage of adults who smoke across Wigan Borough with areas in Hindley Abram Township highlighted

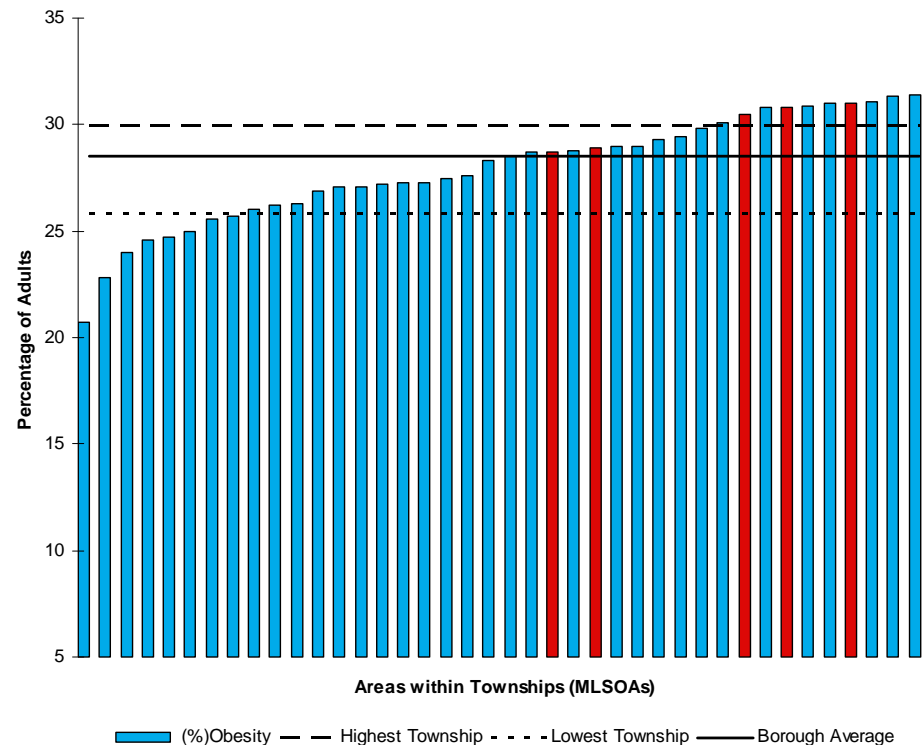


Lifestyle

Obesity

- Overall levels of adult obesity in Wigan borough are estimated to be much higher than the national average.
- 28.5% of the population of Wigan borough are obese compared to 23.6% of the England population as a whole.
- Levels of obesity in Hindley Abram at 31% are higher than both the England and borough average.
- Levels of obesity across Hindley Abram Township vary widely from 28.7% and 31%. All of these areas are above the borough average and several are among the highest in the borough.

Percentage of obese adults across Wigan Borough with areas in Hindley, Abram Township highlighted

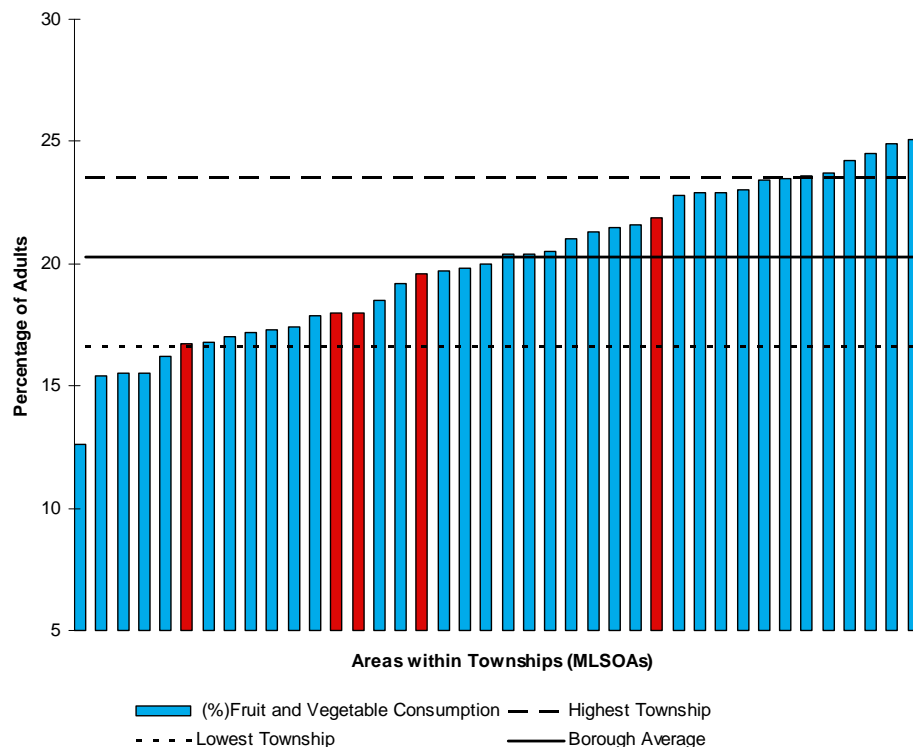


Lifestyle

Diet

- Fewer adults in Wigan have a healthy diet compared to England as a whole.
- The national average for healthy eating is 26.3%
- Estimates for healthy eating in Wigan borough suggest that only 20% of the adult population overall eat the recommended five daily portions of fruit and vegetables.
- 18.8% of adults in Hindley Abram Township eat healthily. This is a little lower than both the England and Wigan Borough averages.
- The range of estimates between the areas in Hindley Abram Township is broad, from 16.7% of residents eating healthily in the lowest area to 21.9% in the highest area.
- Most areas are estimated to have lower levels of healthy eating that the borough average. The area with the lowest percentage (16.7%) is in the west of Hindley Abram Township.

Percentage of adults who eat healthily across Wigan Borough with areas in Hindley Abram Township highlighted

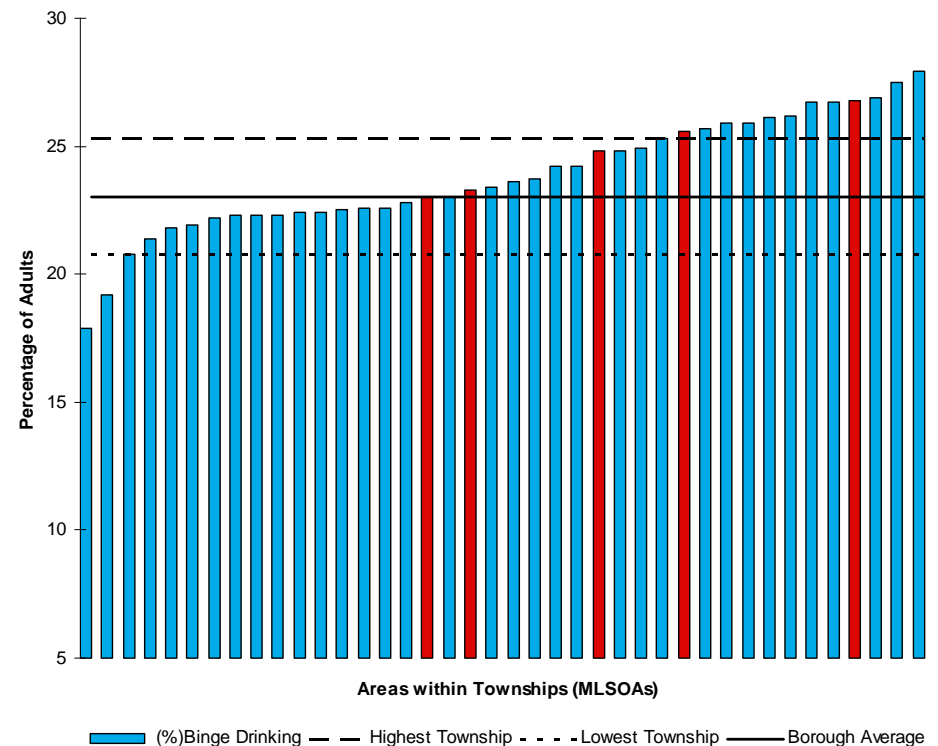


Lifestyle

Alcohol

- Estimates for adult binge drinking in Wigan borough suggest that 23% of the population binge drink. This is higher than the England average of 18%.
- Estimates suggest that 24.7% of Hindley Abram Townships adult population binge drinks. This is higher than both the England average and the borough average.
- The estimated percentage of the adult population that binge drinks varies within Hindley Abram Township from 23% and 26.8%.
- All areas have a binge drinking estimate that is higher than the borough average.

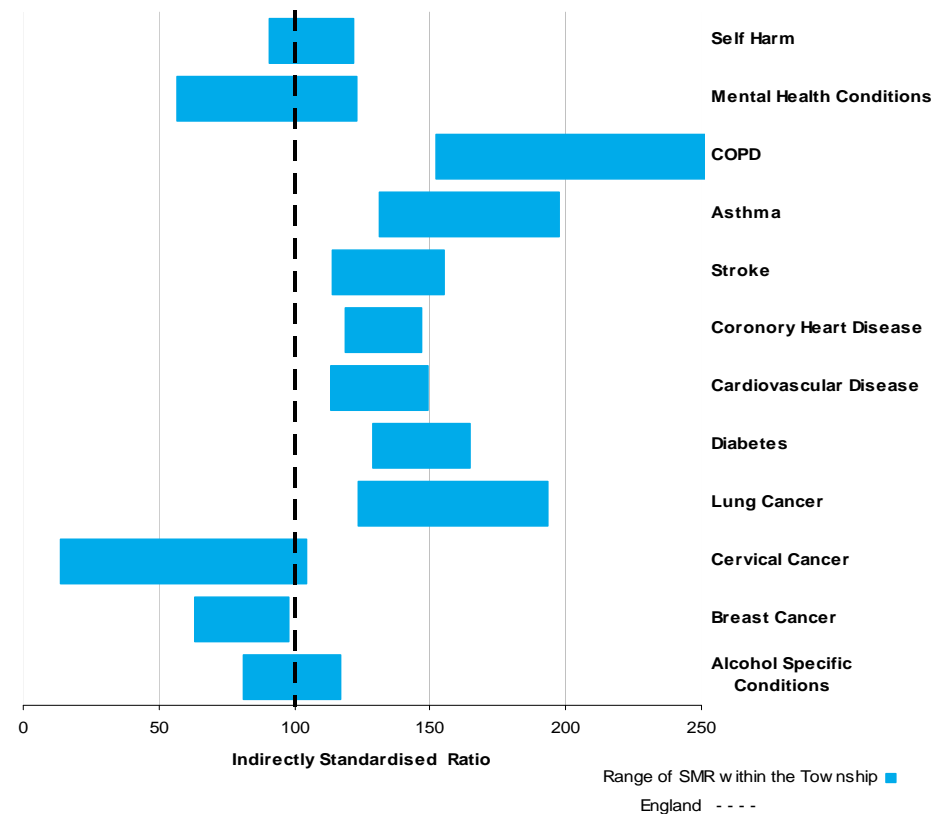
Percentage of adults who binge drink across Wigan Borough with areas in Hindley Abram Township highlighted



Disease

- These ratios compare the expected disease levels with actual disease levels in a population.
- Hindley Abram Township has higher than expected levels of COPD, asthma, stroke, coronary Heart disease, cardiovascular disease, diabetes and lung cancer.
- There is a wide range within Hindley Abram Township with the lowest ratios tending to be found in the east and the highest in the south, central and west areas.
- Ratios for COPD and asthma are particularly high in south, central and west areas.
- The highest ratios for lung cancer occur in the central and west areas.
- Levels of self harm and mental health conditions tend to be low in Hindley Abram Township although higher levels than expected are found in the west.
- Cervical cancer and breast cancer are lower than would be expected in a similar population.

Range of standardised ratios between areas in Hindley Abram Township

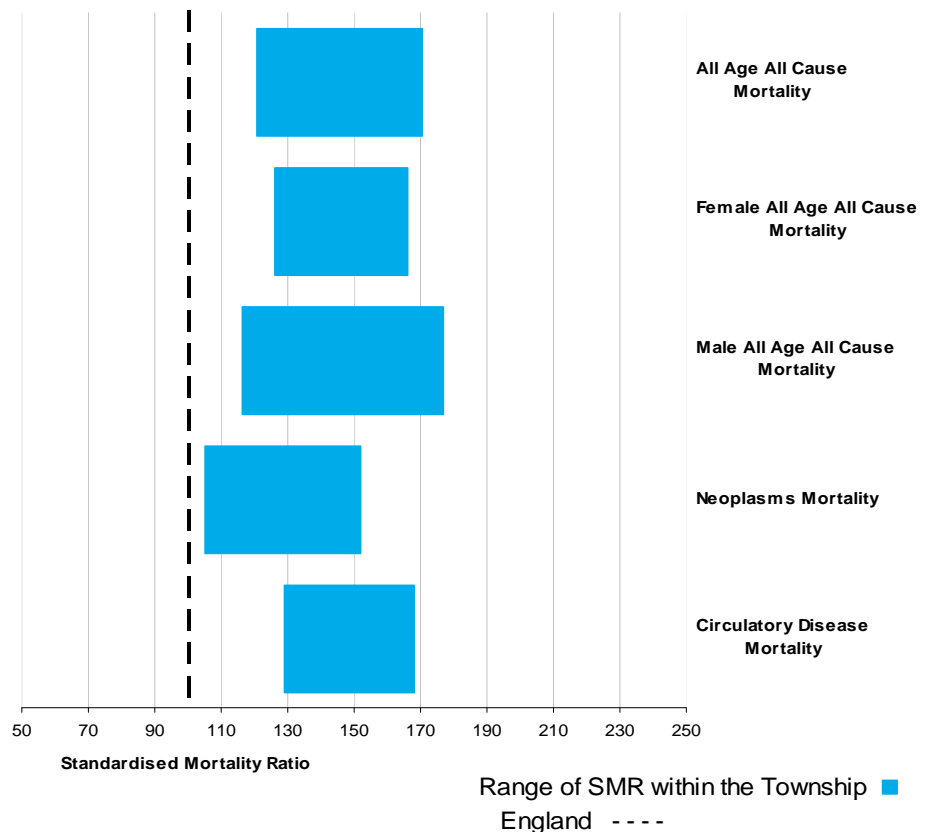


Mortality

All Age

- These standardised mortality ratios compare the expected levels of mortality with actual mortality.
- All areas in Hindley Abram Township have mortality ratios that are higher than expected.
- The north has the highest mortality ratios for both men and women. The south, west and central areas also have high ratios.
- The lowest ratios for men and women are found in the east area of the township
- Circulatory disease mortality is high across Hindley Abram Township.
- Neoplasms mortality is high apart from in the east. The highest ratio for Neoplasm Mortality is found in the western area of the township.

Range of standardised mortality ratios (SMR) between areas in Hindley Abram Township

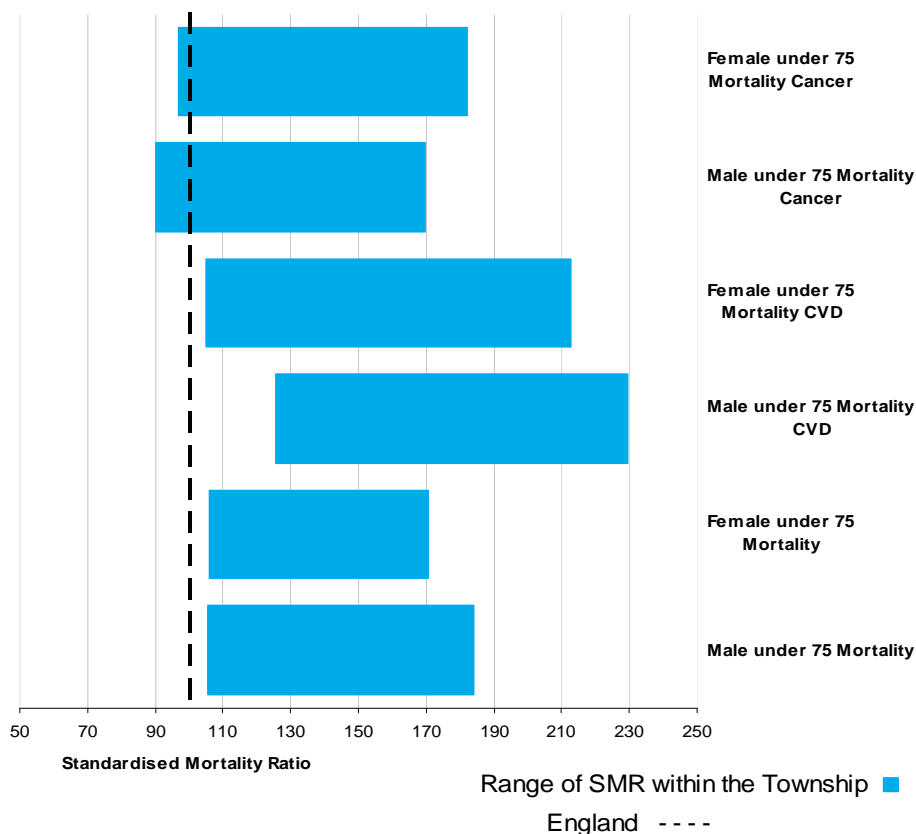


Mortality

Early Deaths (under 75 years old)

- These standardised mortality ratios compare the expected levels of mortality with actual mortality.
- The range of mortality ratios in Hindley Abram Township is wide although four out of five areas in this township have high ratios while the eastern area, has ratios that are lower.
- The north, south, west and central areas of Hindley Abram Township have high under 75 mortality ratios for both men and women.
- Male under 75 mortality from CVD is much higher than would be expected across Hindley Abram Township. The highest ratio for male CVD mortality is found in the western area of this township and the lowest in the east.
- Female under 75 CVD mortality ratios are highest in the west and central areas and lowest in the east area.

Range of standardised mortality ratios (SMR) between areas in Hindley Abram Township highlighted



Summary Table

Shorthand used in this report		North	Central	East	West	South
MLSOA Code		E02001299	E02001302	E02001305	E02001310	E02001312
Lifestyle (Model based estimates)	1 Smoking (%)	27	29.6	22.1	35.4	30.8
	2 Obesity (%)	28.9	30.5	28.7	30.8	31
	3 Consumption of Fruit and Vegetables (%)	19.6	18	21.9	16.7	18
	4 Binge Drinking (%)	23	24.8	23.3	25.6	26.8
Disease (Indirectly Standardised Ratios)	5 Self Harm	111.39	99.31	90.87	121.69	104.53
	6 Mental Health Conditions	96.58	98.05	56.71	122.71	63.07
	7 COPD	160.95	261.08	152.34	266.38	239.86
	8 Asthma	151.57	170.78	131.35	197.64	181.42
	9 Stroke	151.58	139.28	114.26	155.36	136.59
	10 Coronary Heart Disease	136.04	141.78	118.96	140.19	146.79
	11 Cardiovascular Disease	127.86	134.88	113.35	149.42	133.08
	12 Diabetes	128.84	157.17	131.45	153.17	164.74
	13 Lung Cancer	128.69	193.21	130.03	192.16	123.6
	14 Cervical Cancer	45.02	104.26	46.79	73.43	13.69
	15 Breast Cancer	64.78	98.05	95	95.15	63.03
	16 Alcohol Specific Conditions	116.76	108.67	81.28	121.12	105.96
	Mortality All Age (Standardised Mortality Ratios)	17 AAACM	170.63	151.9	120.89	151.68
18 AAACM - Males		176.94	161.32	116.23	155.33	163.39
19 AAACM - Females		165.92	144.04	126.04	148.19	130.21
20 Neoplasms Mortality		126.57	137.27	105.3	151.97	147.1
21 Circ. Disease Mortality		154.97	168.21	129.16	150.96	141.57
Mortality Early Deaths (Standardised Mortality Ratios)	22 <75 Male Mortality	167.96	161.9	105.4	183.89	151.75
	23 <75 Female Mortality	152.74	170.33	106.08	170.77	151.98
	24 <75 Male Cancer Mortality	149.83	104.38	89.97	169.45	161.6
	25 <75 Female Cancer Mortality	142.72	181.9	97.05	163.54	153.08
	26 <75 Male CVD Mortality	179.08	209	125.79	229.32	163.08
	27 <75 Female CVD Mortality	114.39	162.41	113.14	212.51	105.13

Further information:

The data in this report can be accessed and mapped via the Wigan local information system (W.I.S.D.O.M.) via <http://kinnear.wigan.gov.uk/iads/>
Go to the data views section and access "Health Summary Data (MSOA)"

This data has been sourced from the North West Public Health Observatory (www.nwpcd.net).

Contact Antoinette Egan,
antoinette.egan@alwpct.nhs.uk

1. Percentage Smoking (16+): ONS Synthetic estimate (2003-2005). 2. Percentage Obese (16+): ONS Synthetic estimate (2003-2005). 3. Percentage of Adults Eating 5 or More Portions of Fruit or Vegetables a Day (16+): ONS Synthetic estimate (2003-2005). 4. Percentage Binge Drinking (16+): ONS Synthetic estimate (2003-2005). 5. Self Harm: Hospitalised Incidence. Indirectly standardised ratio for emergency admission to hospital for self harm (2001-2005). 6. Mental Health Conditions: Hospitalised Prevalence. Indirectly standardised ratio for emergency or elective admission to hospital for mental health conditions (2001-2005). 7. Chronic Obstructive Pulmonary Disease: Hospitalised Prevalence. Indirectly standardised ratio for emergency or elective admission to hospital for chronic obstructive pulmonary disease (2001-2005). 8. Asthma: Hospitalised Prevalence. Indirectly standardised ratio for emergency or elective admission to hospital for alcohol specific conditions (2001-2005). 9. Stroke: Hospitalised Incidence. Indirectly standardised ratio for emergency admission to hospital for stroke (2001-2005). 10. Coronary Heart Disease: Hospitalised Incidence. Indirectly standardised ratio for emergency admission to hospital for coronary heart disease (2001-2005). 11. Cardiovascular Conditions: Hospitalised Incidence. Indirectly standardised ratio for emergency admission to hospital for cardiovascular conditions (2001-2005). 12. Diabetes: Hospitalised Prevalence. Indirectly standardised ratio for emergency or elective admission to hospital for diabetes (2001-2005). 13. Lung Cancer: Hospitalised Prevalence. Indirectly standardised ratio for emergency or elective admission to hospital for lung cancer conditions (2001-2005). 14. Cervical Cancer - Female: Hospitalised Prevalence. Indirectly standardised ratio for emergency or elective admission to hospital for cervical cancer (2001-2005). 15. Breast Cancer - Female: Hospitalised Prevalence. Indirectly standardised ratio for emergency or elective admission to hospital for breast cancer (2001-2005). 16. Alcohol Specific Conditions: Hospitalised Prevalence. Indirectly standardised ratio for emergency or elective admission to hospital for alcohol specific conditions (2001-2005). 17. All Age All Cause Mortality (AAACM). Indirectly standardised ratio. All persons who died of any cause (2001-2005). 18. All Age All Cause Mortality - Females. Indirectly standardised ratio. All males all ages who died from all causes (2001-2005). 19. All Age All Cause Mortality - Males. Indirectly standardised ratio. All males all ages who died from all causes (2001-2005). 20. Neoplasms Mortality. Indirectly standardised ratio. All persons who died of any neoplasm (2001-2005). 21. Circulatory Disease Mortality. Indirectly standardised ratio. All persons who died of circulatory disease (2001-2005). 22. Under 75 Years Mortality from All Causes - Females. Indirectly standardised ratio. All females aged under 75 years who died from all causes (2001-2005). 23. Under 75 Years Mortality from All Causes - Males. Indirectly standardised ratio. All males aged under 75 years who died from all causes (2001-2005). 24. Under 75 Mortality from CVD - Females. Indirectly standardised ratio. All females aged under 75 years who died of cardiovascular disease (2001-2005). 25. Under 75 Mortality from CVD - Males. Indirectly standardised ratio. All males aged under 75 years who died of cardiovascular disease (2001-2005). 26. Under 75 Years Mortality from Cancer - Females. Indirectly standardised ratio. All females aged under 75 years who died of cancer (2001-2005). 27. Under 75 Years Mortality from Cancer - Males. Indirectly standardised ratio. All males aged under 75 years who died of cancer (2001-2005).