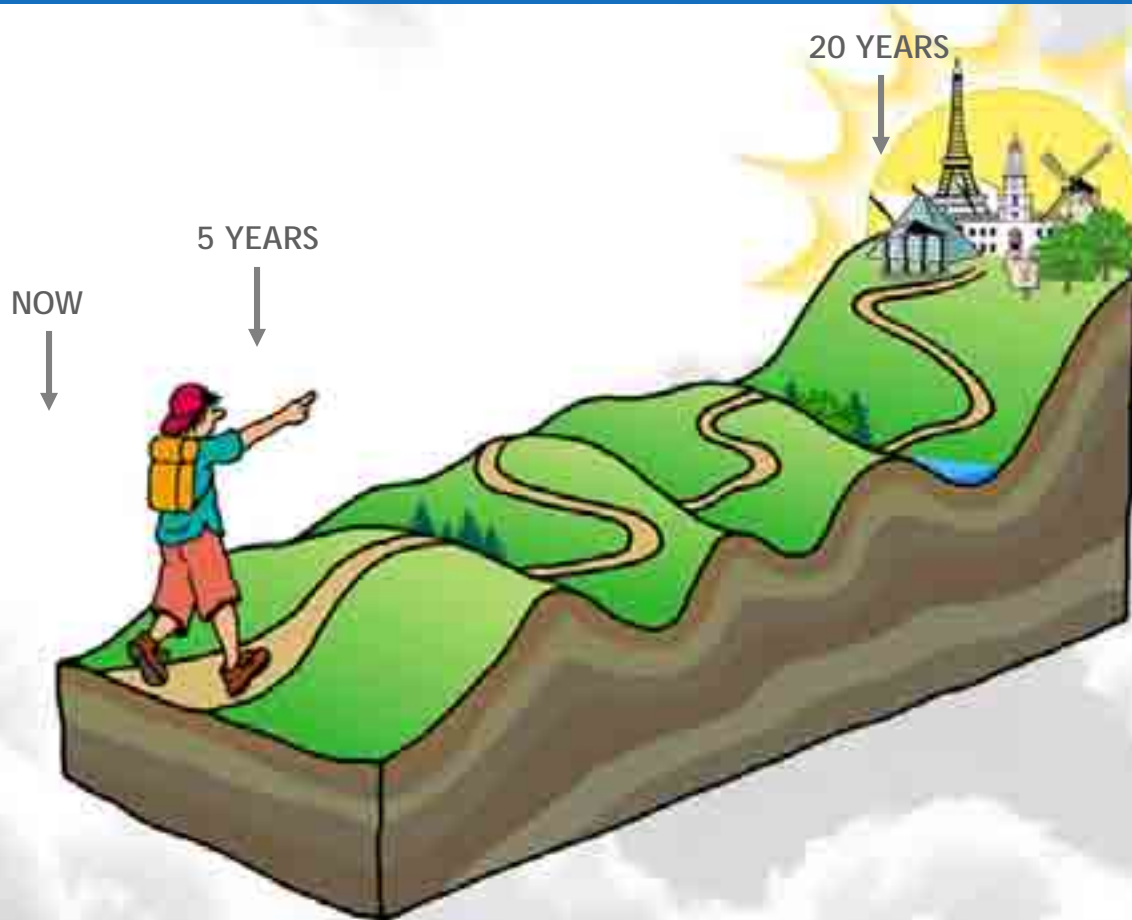


Wigan Life

10th Anniversary Convention

Celebrating **10 Years** of Partnership Working 2000 - 2010

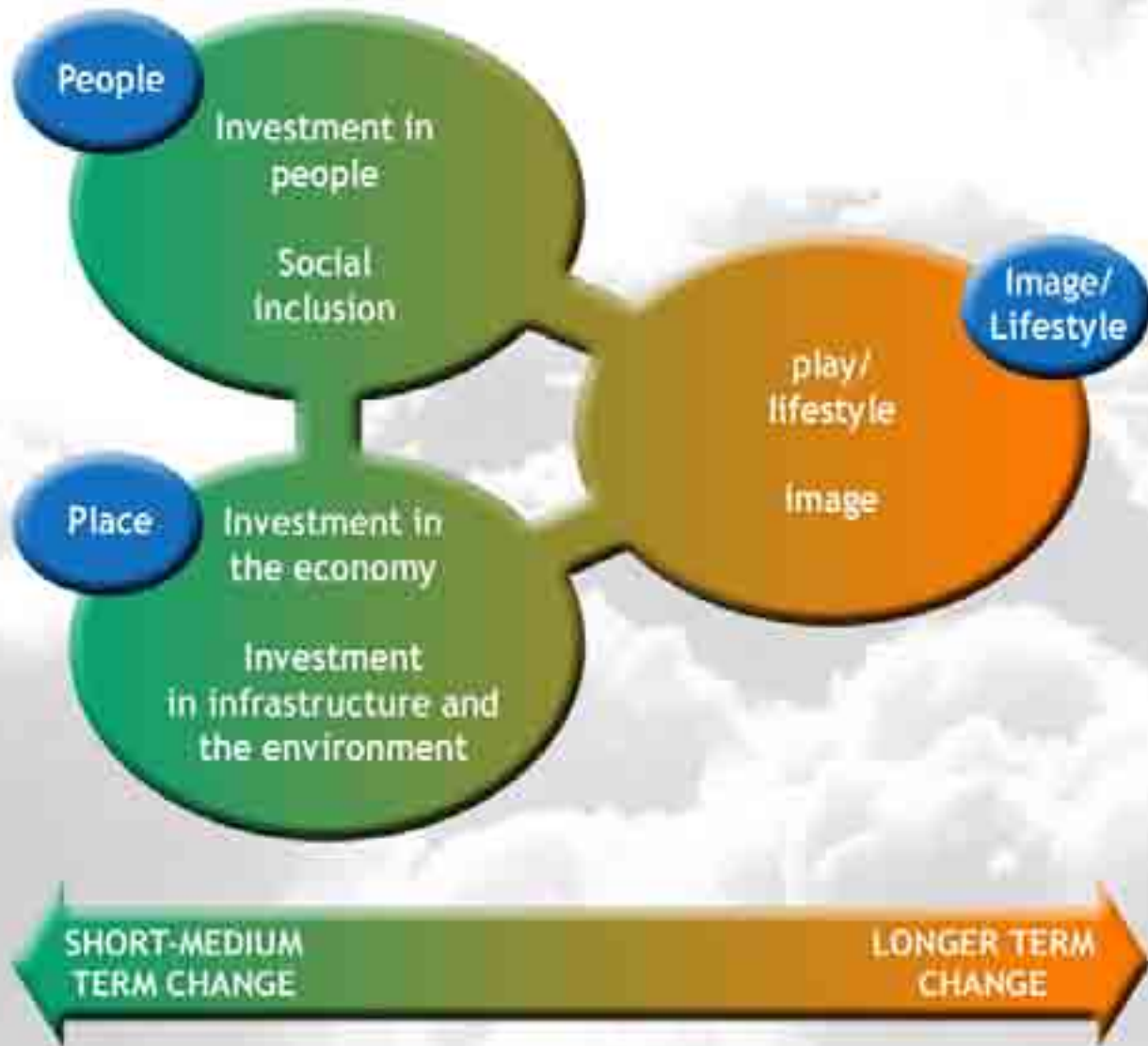
The journey we've been on: Medium and long-term horizons



We need to keep our eyes focussed firmly on the long term vision

But we need to negotiate a series of short/medium term objectives at which we might need to adjust our direction

2000 AD - 10 years ago: six vision themes



- They provide a framework for strategic planning with the partnerships
- But do they constitute a vision?
- More community participation needed to establish the vision

Community Strategy

4 key – long term priorities



2010





Bob Allen: Looking back on 20 years in Wigan with Groundwork and the partnerships



Pamela Ball

Chief Officer

Wigan & Leigh CVS


WiganLife 

What is Partnership?

- Collaborative
- Joined up
- Level playing field
- Equal opportunities
- Equal voice



WiganLife 

A group of approximately 20 diverse people of various ages and ethnicities are sitting on the floor in a large circle. They are dressed in casual clothing like t-shirts, jeans, and hoodies. The background is plain white. The text is centered in the middle of the circle.

Fair does not mean
everybody gets the
same:

**Fair means everyone
gets what they need**

**Joyce Redfearn
Wigan Council
Chief Executive**

WiganLife 

10 Years of the Wigan Borough Partnership

**Have we made a difference to
the people of the Borough?**

WiganLife 

Changing Priorities

2001 Priorities

- Growing the Local Economy
- Raising the Quality of the Environment
- More Efficient and Sustainable Transport
- Improving the Borough's Lifestyle/'Play'/Culture
- Improving standards of living

• Reducing Health Inequalities

- Investing in Young People
- Investing in People – Lifelong Learning

- Safer and More Pleasant Neighbourhoods
- Improving our Image of Ourselves

2008 Priorities

Ambitious Communities

Living Healthier and Longer

Realising Aspirations

Strong Community

WiganLife 

Improving Standards of Living

Problems then...

- Deprivation – Wigan the **57th** most deprived Local Authority in the country

And now?

- Wigan's deprivation levels have improved (now **67th**)

More Efficient & Sustainable Transport / Ambitious Communities

Problems then...

- Poor image in terms of accessibility
- Low levels of public transport use
- Pollution hotspots

And now?

- 73% of residents agree that traffic congestion is a problem in their area
- Only around 14% of residents use public transport (lowest in Greater Manchester)

Reducing Health Inequalities/ Living Healthier and Longer

Problems then...

High rates of teenage pregnancy

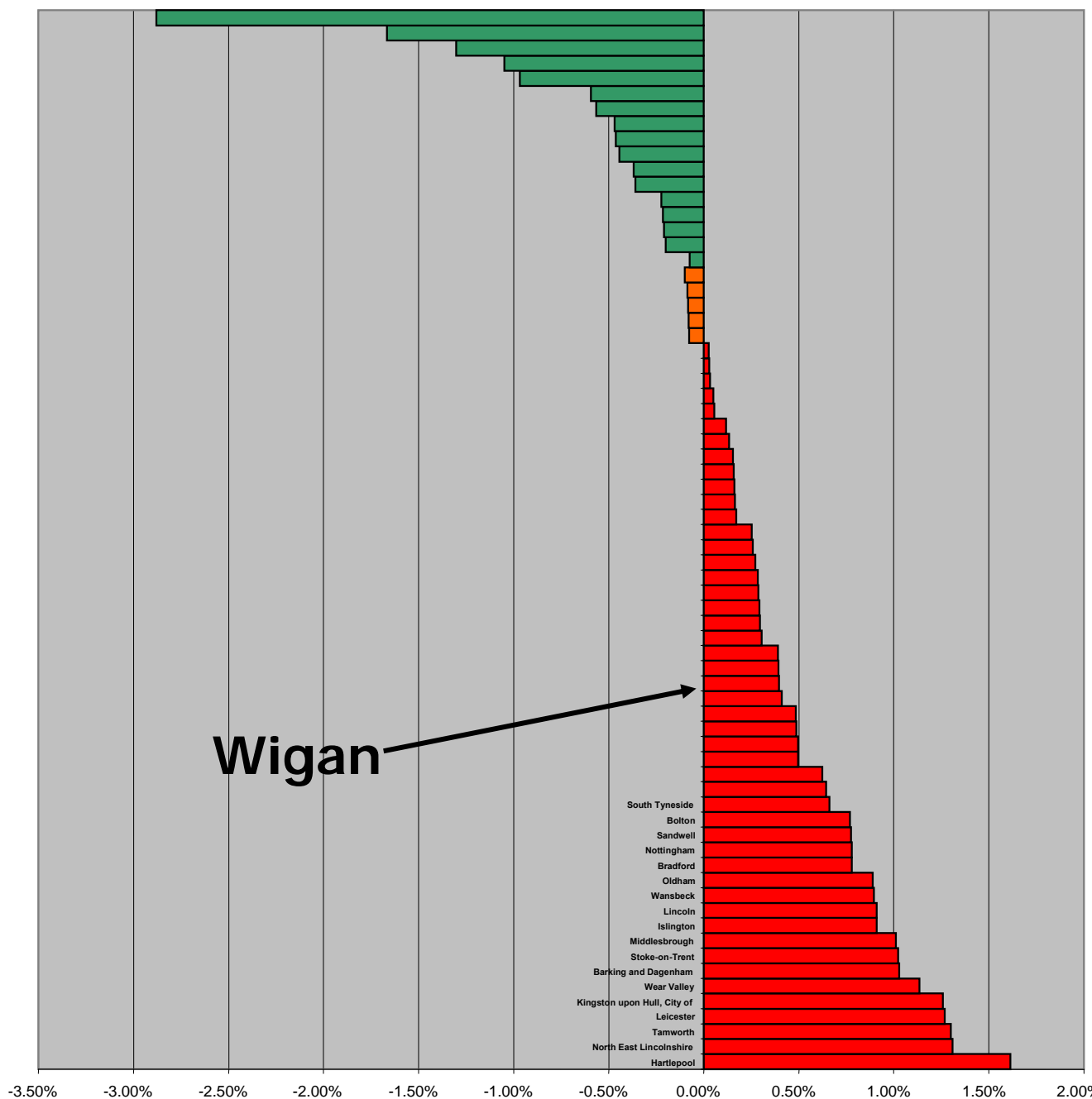
- High death rate from Coronary Heart Disease (CHD)

- **And now?**

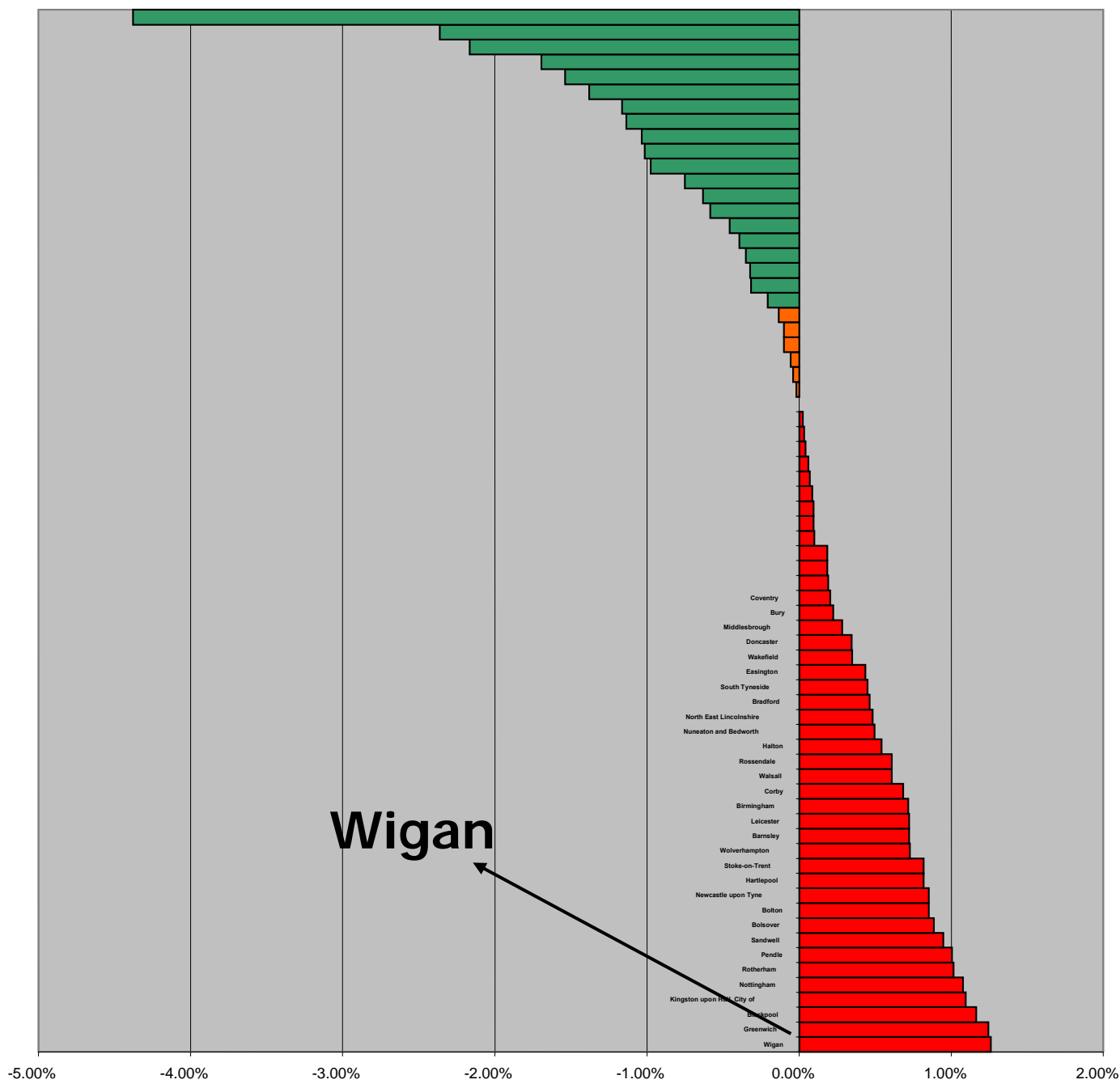
- Deaths from CHD still significantly above the national average

- Teenage pregnancy rates coming down, but still above the national average

Change in Inequalities Gap in Spearhead Areas: Women



Change in Inequalities Gap in Spearhead Areas: Men



Safer & more pleasant Neighbourhoods / Strong Community

Problems then...

- Perceptions of crime
- Fear of anti-social behaviour
- Problems with litter
- Vacant housing

• **And now?**

- Actual crime level reducing – perception is still major problem
- Drugs perceived to be problem: Wigan South Tyldesley-Astley
- Drunk/rowdy behaviour seen as a problem in Wigan South & Leigh
- Vacant dwellings a problem in parts of Wigan, Leigh. Platt Bridge

WiganLife 

Improving our Image of Ourselves/ Strong Community

Problems then...

- Low levels of civic participation
- Local rivalries / parochialism (Wigan v Leigh)
- Focus on historic tradition – images of mills, cloth caps, grime and poverty persist to outsiders
- **And now?**
- Still low levels of civic participation
- Still evidence of parochialism
- Launch of Wigan Life - 'Wigan is Changing'

WiganLife 

Investing in Young People/ Realising Aspirations

Problems then...

- Need to improve attainment levels
- Need to improve those with nationally-recognised qualifications
- Improve the rate of young people entering higher education

And now?

- Wigan now above England average for rate of 5 A*-C GCSEs
- Still below the average including English and Maths at GCSE
- Gap between achievement of different ethnic groups
- Increase in University applications above national average increase: but still low levels from Borough's most deprived areas

Investing in People – Lifelong Learning/ Realising Aspirations

Problems then...

- Low expectations and aspirations amongst adults and children from the Borough's most deprived areas
- Need to increase skill levels of the population

And now?

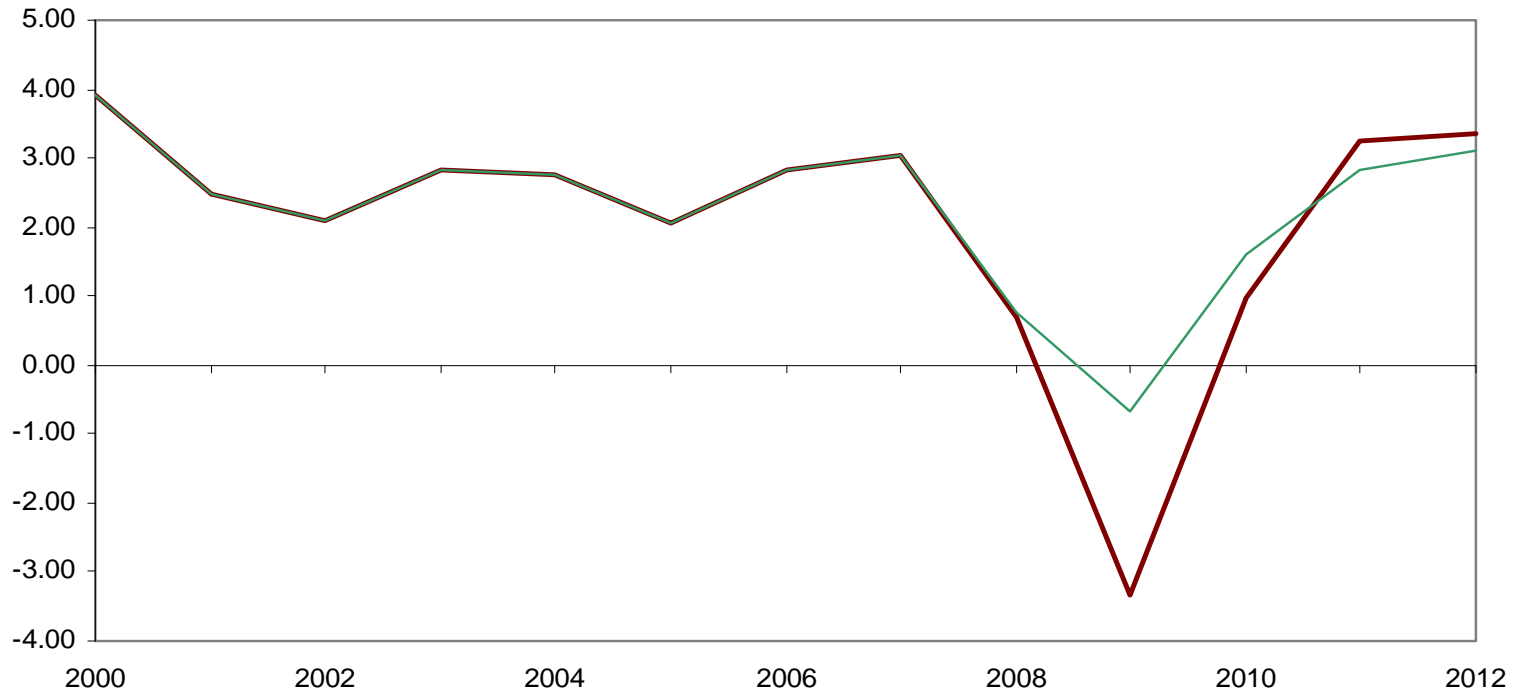
- Qualification levels increasing, but...
- Still high no. of residents have no qualifications (17%)
- Only 17.3% qualified to Level 4 or above compared to a national average of 30.2%

Public spending (£m)

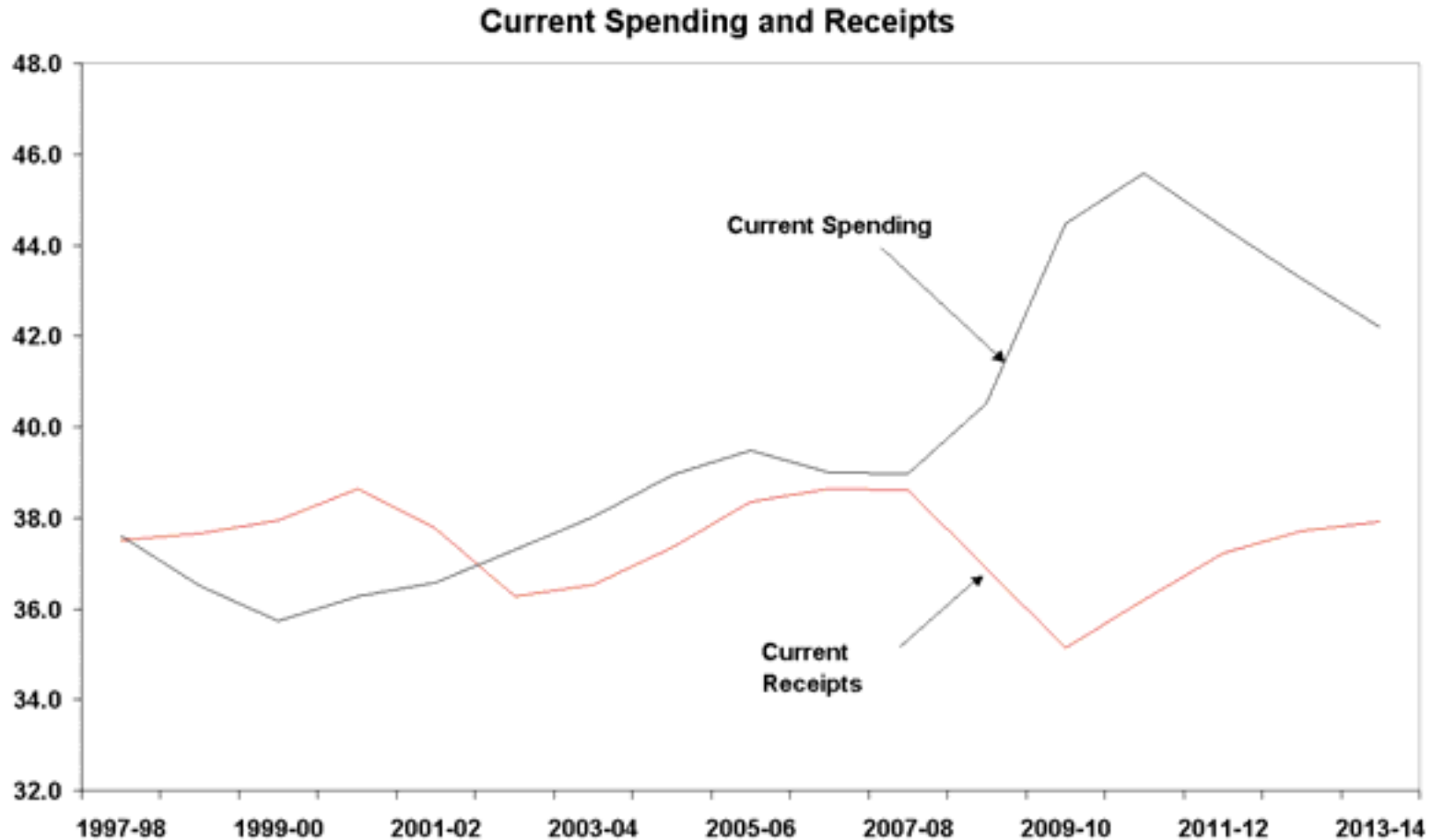
	WIGAN (£m)	Manchester City Region (£m)
LA	£699m	£6,977m
PCT	£521m	£4,768m
DWP	£698m	£6,079m
Total	£1,918m	£17,824m
Population	306,000	2,757,000
£/head	£6,300	(£6,500)

Future of National Public Spending

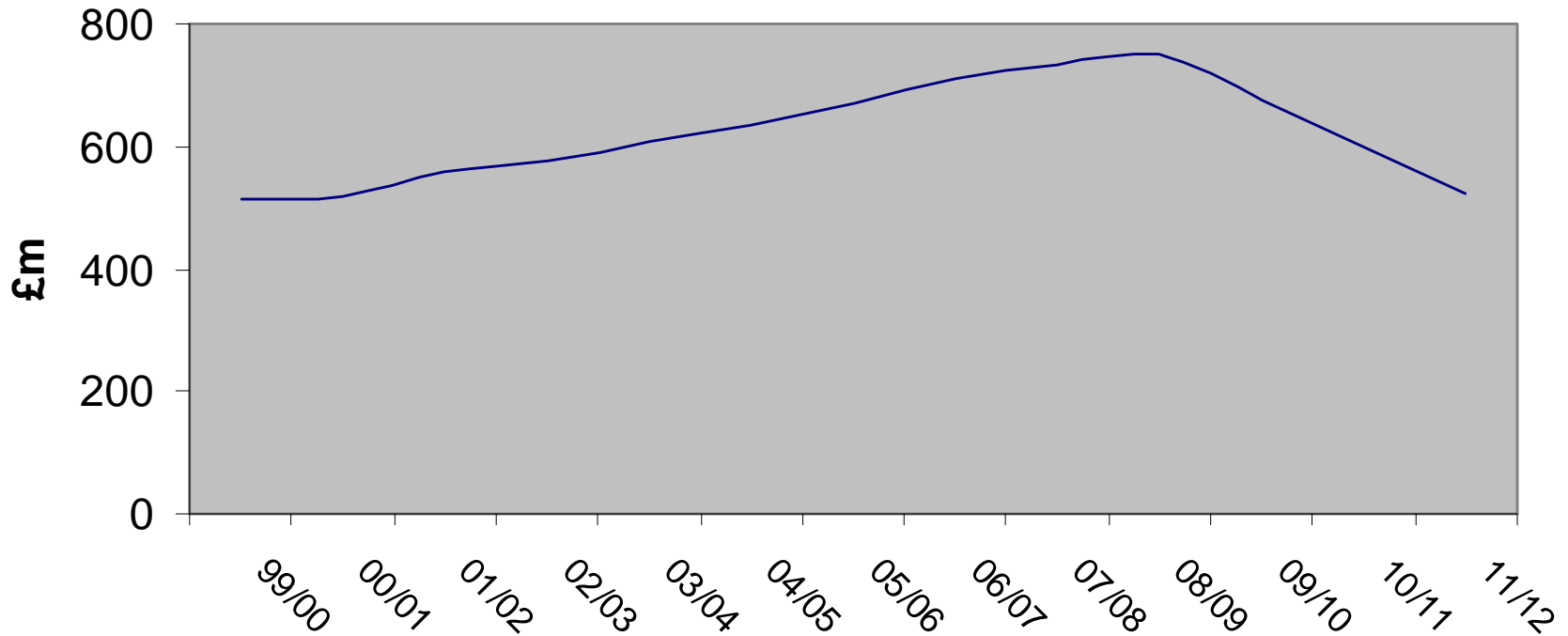
UK GDP Growth: Percentage change on a year earlier



Balance of National Tax & Spend



Wigan Council - Revenue Expenditure (2000 - 2012)



In 2008/09 Wigan had:

- **500 children in foster and residential care**
- **7,000 young people using Youth Services**
- **10,099 people receiving a social care service**
- **2,813 provided with home care**
- **45,000 children in 131 schools**
- **1,008km of carriageway**
- **1,906km of footway**
- **35,687 Street Lights**
- **312,000 tonnes of domestic waste**

WiganLife 

Planning Ahead: Some big issues facing us











Strength in Numbers

- Being clear about our ambition



- Focus more clearly on 'big issues' & long-term challenges

- Strengthen our performance



- Doing more with less

WiganLife 

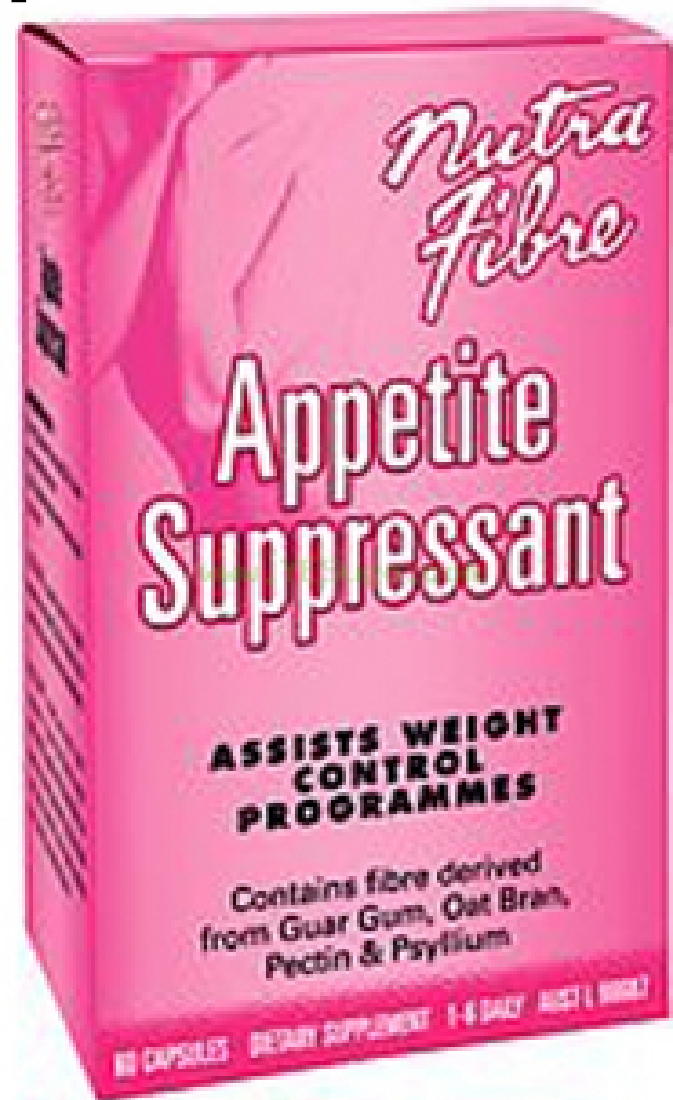
Collective resources required to invest and improve

- Matching skills to jobs
- Congestion
- Recycling
- Community Involvement and participation particularly vulnerable groups
- Alcohol misuse and related crime
- Teenage pregnancy
- Reducing the health inequalities between neighbourhoods
- Joint working across public sectors
- Improvements to children's homes
- Reducing numbers of young people misusing substances

Source: 2009 Area Assessment

So do we need a radically different approach...

- Prevention
- Reducing demand
- Suppressing expectations
- Reducing costs
- Doing things differently



How would you do

more *with less?*

WiganLife 

3 Questions

- What challenges do you / your organisation face?
- How can you help each other?
- What ideas for action

WiganLife

10th Anniversary Convention

Celebrating **10 Years** of Partnership Working 2000 - 2010

WiganLife